

Jelgava in Figures 2013




Jelgava
city for development!



Dear readers of „Jelgava in Figures”!

Jelgava’s model of development remains unchanged – one of Latvia’s centres of industrial development and vocational education with a favourable environment for families and children. It is a model supported by 78% of Jelgava’s citizens. The development of Jelgava is firmly and decisively aimed at improving opportunities and quality of life. Jelgava has one of the lowest unemployment levels in the state.

An important precondition for the development of the city is improvement of infrastructure. Jelgava continues to use the opportunities offered by European Union co-financing for urban projects. This allows us to realize significant plans, encourage the flow of investments and development of business which creates new jobs.

Jelgava has completed several large-scale projects that redefine the city centre to create an open environment friendly to citizens, tourists and business development. Jāņa Čakstes Boulevard, Holy Trinity Church Tower, Raiņa Street, Mitau Bridge, a two-level promenade along Driksa River are objects that bring back the aura of once the capital of Courland Duchy.

Investments in infrastructure development have created safe conditions for investors. Therefore new businesses come to Jelgava and existing ones expand year by year. Businesses like "AKG Thermotechnik Lettland", “Evopipes”, “Latvijas piens”. This year is marked by construction of railway car factory of a Russian company “UVZ Baltija”. “PET Baltija” are expanding their factory. This means new jobs for citizens and added value for various spheres of the city.

In the last five years the municipality has attracted investments of 87 million lats. The largest private investment is of 76 million euros for the construction of a biomass co-generation heating station.

Numbers and facts in this issue are statistics. Many of these numbers have already changed today. However there is a lot of useful information about the city in this issue that characterize the development of the city. I wish to everyone to find something new, useful and interesting in this issue!

A handwritten signature in black ink, appearing to read 'Rāviņš'.

Andris Rāviņš
Jelgava City Council Chairman

Briefly about Jelgava

Jelgava is located in the southern part of the Zemgale plain.

It is the fourth largest city in Latvia.

The total area of Jelgava is 60,3 km², of which:

- water covers 2,72 km²
- parks cover 1,62 km²
- forests cover 12,64 km²



Jelgava is the only city in Latvia that contains the country's small coat of arms within its coat of arms. The city received the coat of arms at the same time as it received city rights, in 1573. The first coat of arms depicted a crowned stag head on a raspberry red field; the current coat of arms contains an elk head on a crimson field.



On October 28th, 1938 the city's flag was approved. The flag is divided into two parts of equal breadth: the upper half is dark blue, the lower – red; in the centre of the flag is the Jelgava city coat of arms.



In 2012 Jelgava City logo was approved. The logo is made up of a contour of an elk head and the word Jelgava. The large antlers symbolize the rich historical experience and value of the city.

Briefly about Jelgava



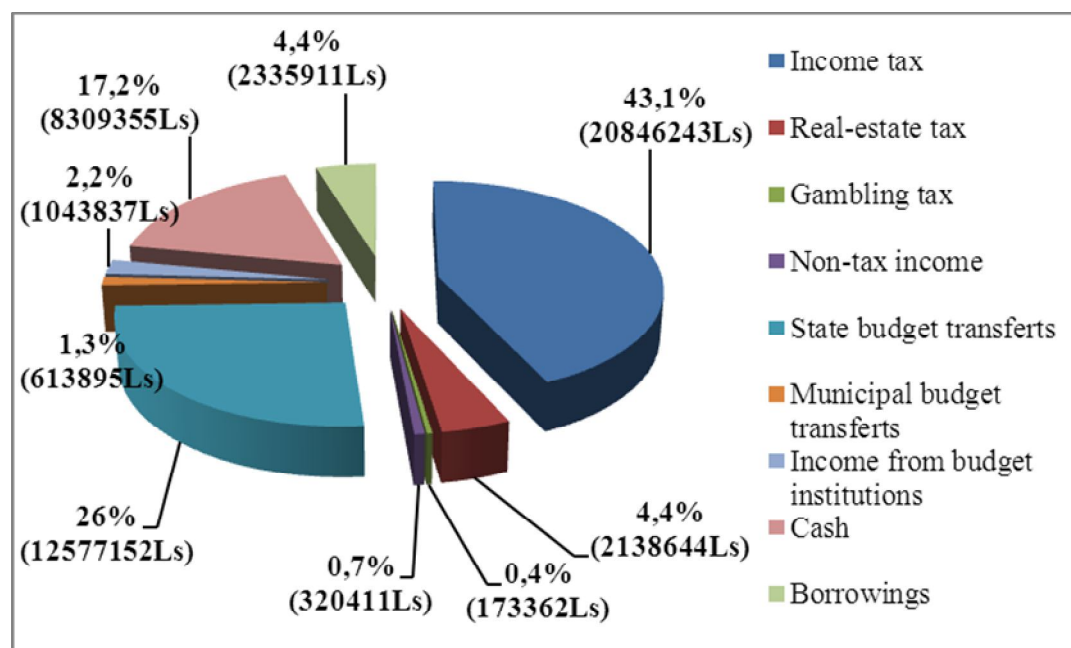
Jelgava also has a motto – „Jelgava – city for development”. The most important value of Jelgava is the people who live, get educated and work here to develop themselves and their city. Jelgava offers opportunities to express themselves to everyone – from children to seniors.

Distances:

Jelgava - Riga	42 km
Jelgava - Vilnius	295 km
Jelgava - Tallinn	350 km
Jelgava - Moscow	1053 km
Jelgava - Stockholm	482 km
Jelgava - Berlin	1221 km
Jelgava - Vienna	1403 km

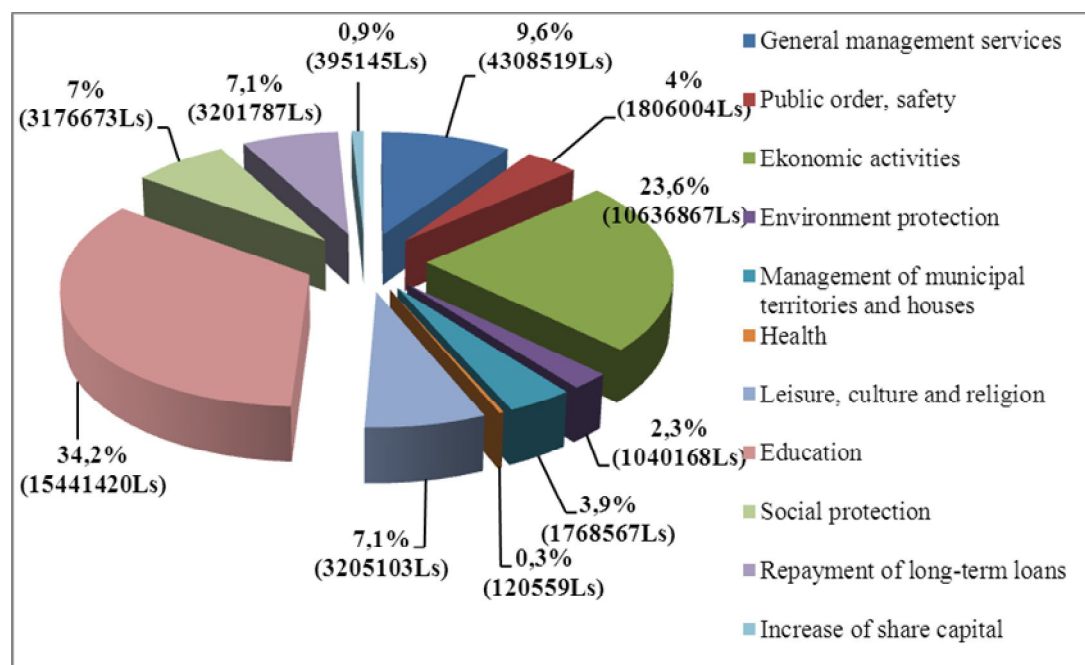
Municipal budget

Budget revenues in 2012, %



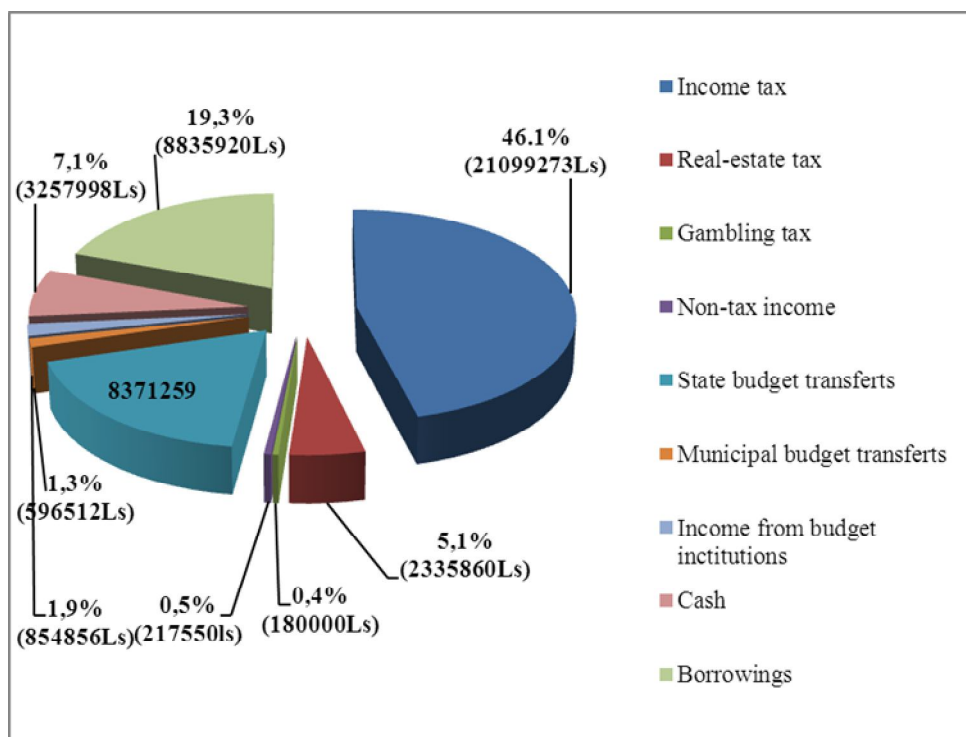
Source: Jelgava city self-government

Budget expenditure in 2012, %



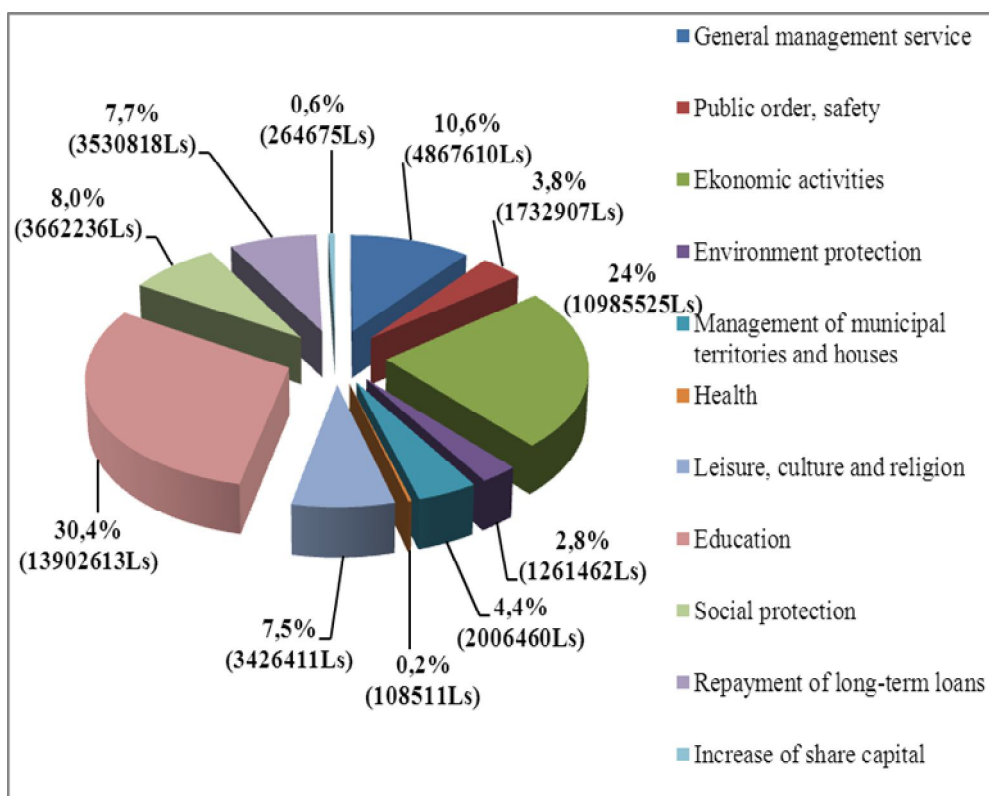
Source: Jelgava city self-government

Planned budget revenues 2013

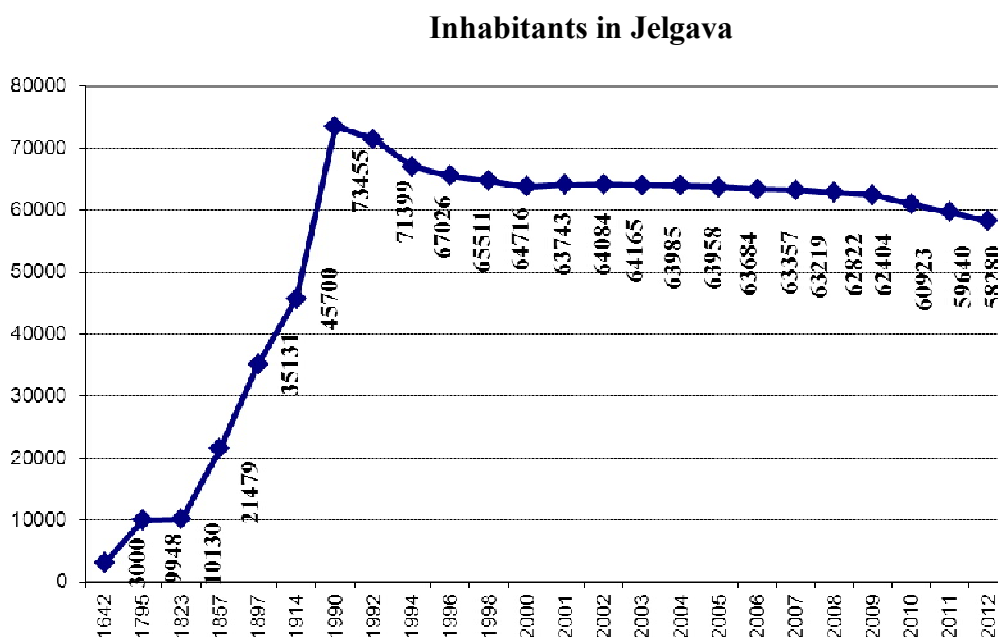


Source: Jelgava city self-government

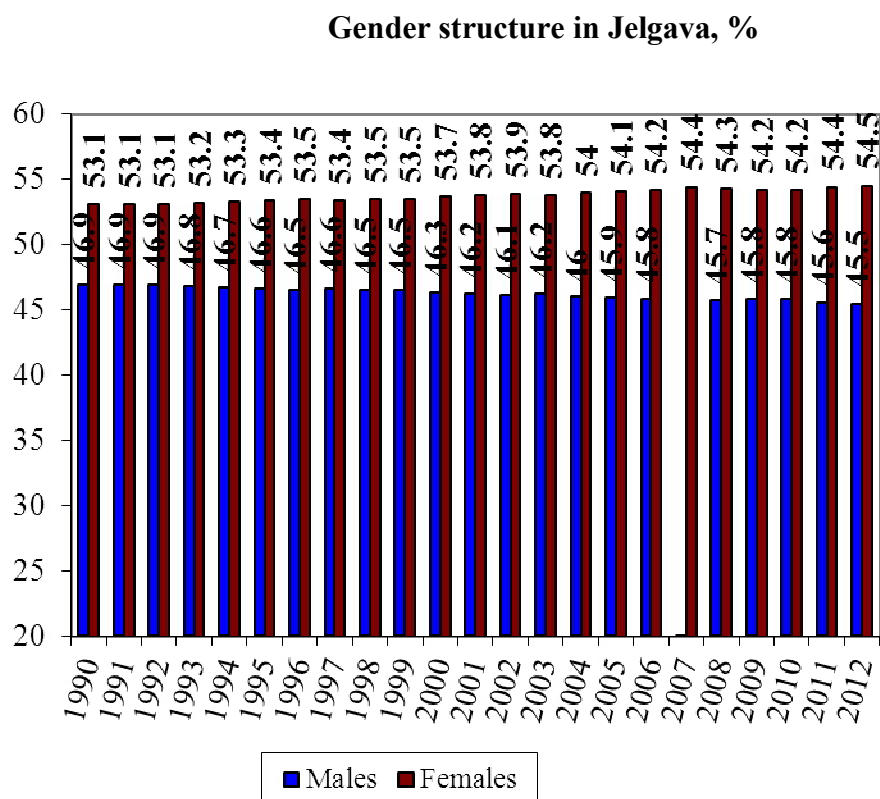
Planned budget expenditure 2013



Source: Jelgava city self-government

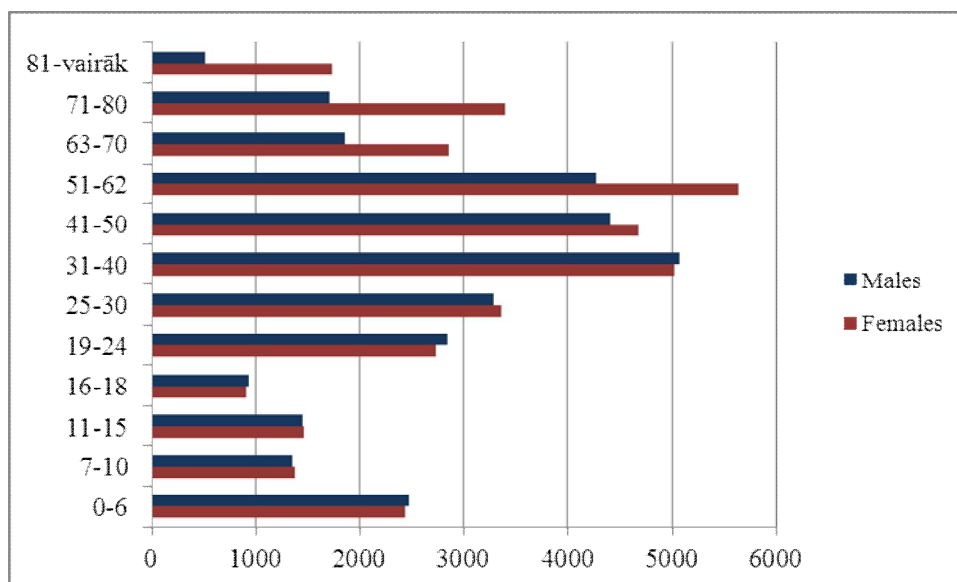


Source: Central Statistical Bureau of Latvia



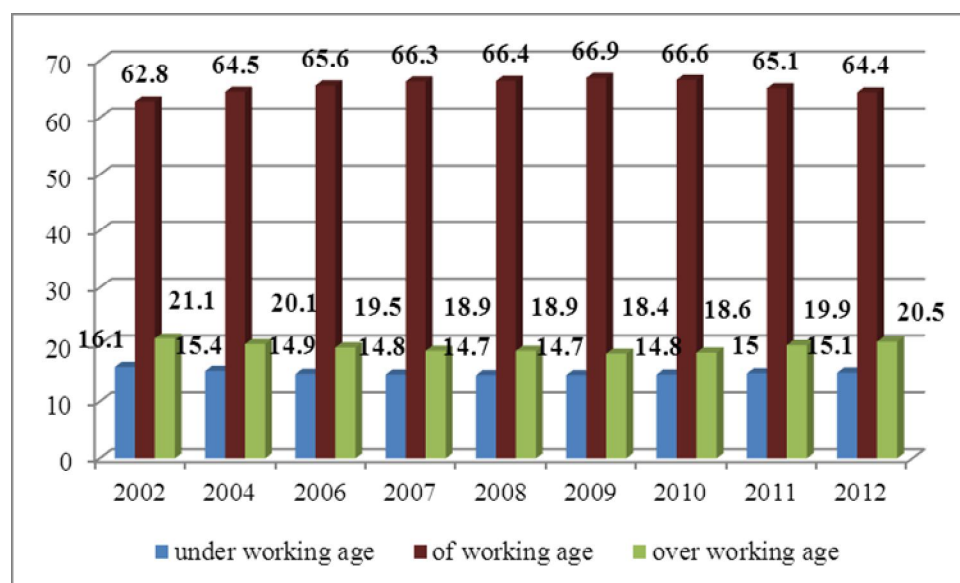
Source: Central Statistical Bureau of Latvia

Gender/age structure in Jelgava



Source: Jelgava city self-government, data as of January 21, 2012

Resident population under working age, of working age, over working age, %



Source: Central Statistical Bureau of Latvia

Jelgava in comparison

Division of the Resident Population of Latvia and its major Cities According to Working Age

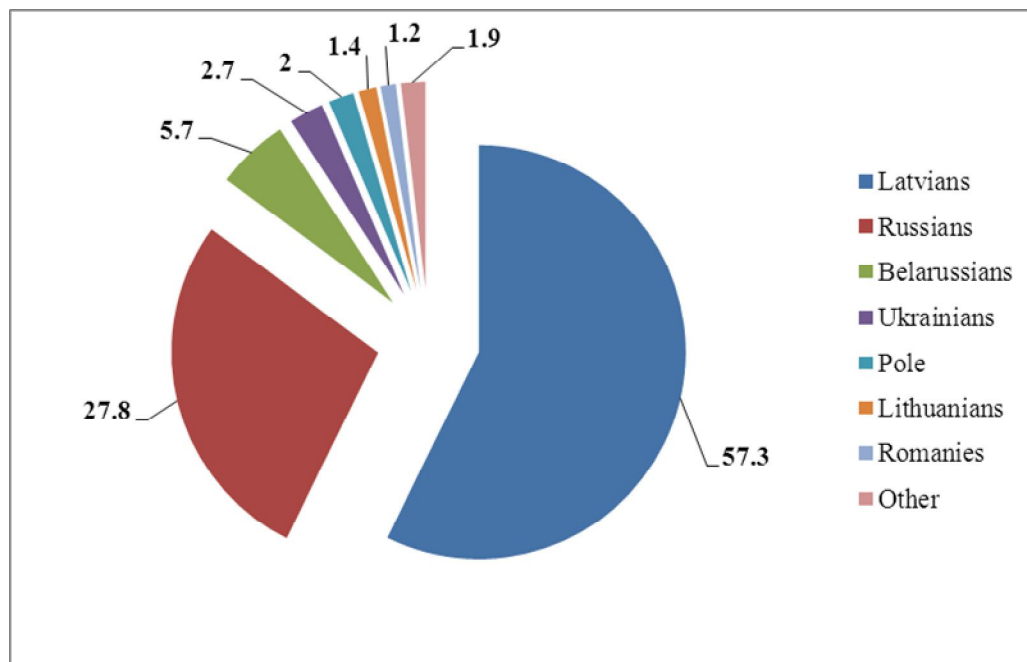
	Division of the Resident Population into Age Groups in 2010		
	Under working age,%	Of working age%	Over working age, %
Jelgava	14,8	66,6	18,6
Rīga	12,7	65,9	21,4
Daugavpils	12,5	67,4	20,1
Jēkabpils	14,7	66,3	19
Jūrmala	13,3	65,9	20,8
Liepāja	14,9	64,6	20,5
Rēzekne	13,8	66,8	19,4
Valmiera	14,6	65,9	19,5
Ventspils	13,9	66	20,1
Latvija	13,8	66	20,2

	Division of the Resident Population into Age Groups in 2011		
	Under working age,%	Of working age%	Over working age, %
Jelgava	15	65.1	19.9
Rīga	12.9	65	22.1
Daugavpils	12.8	65.2	22
Jēkabpils	15.1	65	19.9
Jūrmala	14	63.4	22.6
Liepāja	15.4	62.5	22.1
Rēzekne	14.2	65.2	20.6
Valmiera	14.6	64.2	21.2
Ventspils	14.4	63.8	21.8
Latvija	14.2	64.2	21.6

	Division of the Resident Population into Age Groups in 2012		
	Under working age,%	Of working age%	Over working age, %
Jelgava	15.1	64.4	20.5
Rīga	13.3	64	22.7
Daugavpils	13	64.1	22.9
Jēkabpils	15.2	64.2	20.6
Jūrmala	14.3	62.5	23.2
Liepāja	15.4	61.9	22.7
Rēzekne	14.1	64.6	21.3
Valmiera	14.8	63.2	22
Ventspils	14.3	63	22.7
Latvija	14.3	63.6	22.1

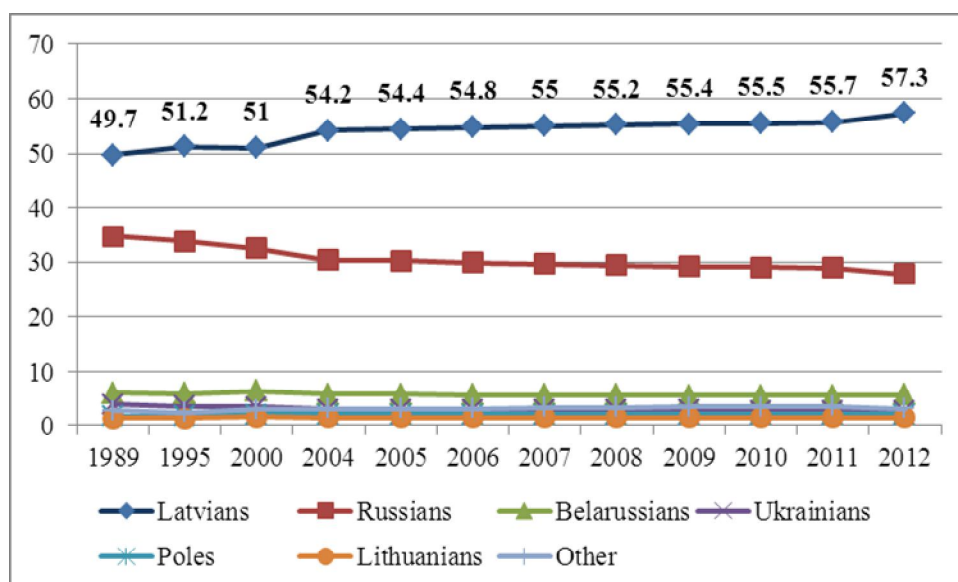
Source: Central Statistical Bureau of Latvia

Nationalities in Jelgava 2012, %



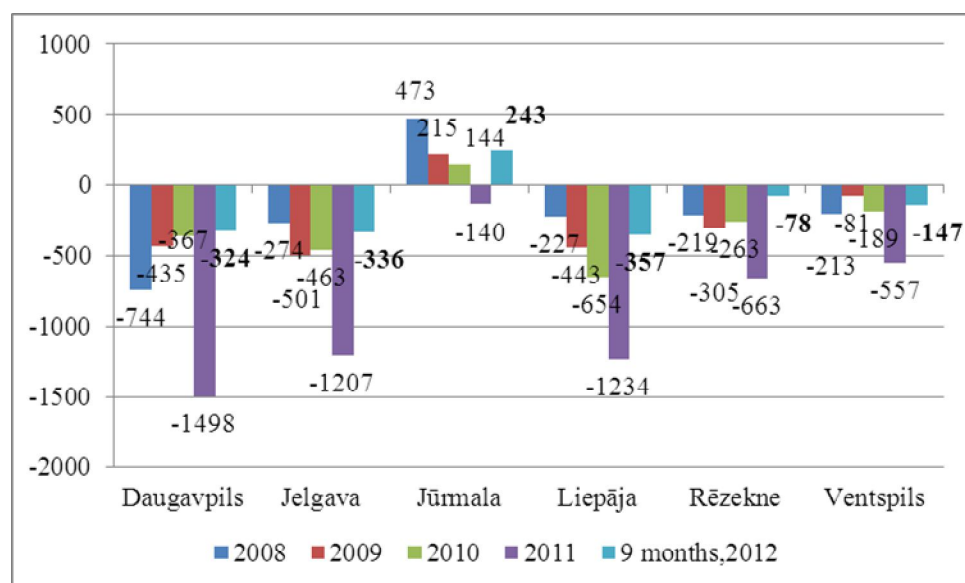
Source: Central Statistical Bureau of Latvia

National composition of inhabitants, %



Source: Central Statistical Bureau of Latvia

Migration balance in the major Cities 2008.-2012.



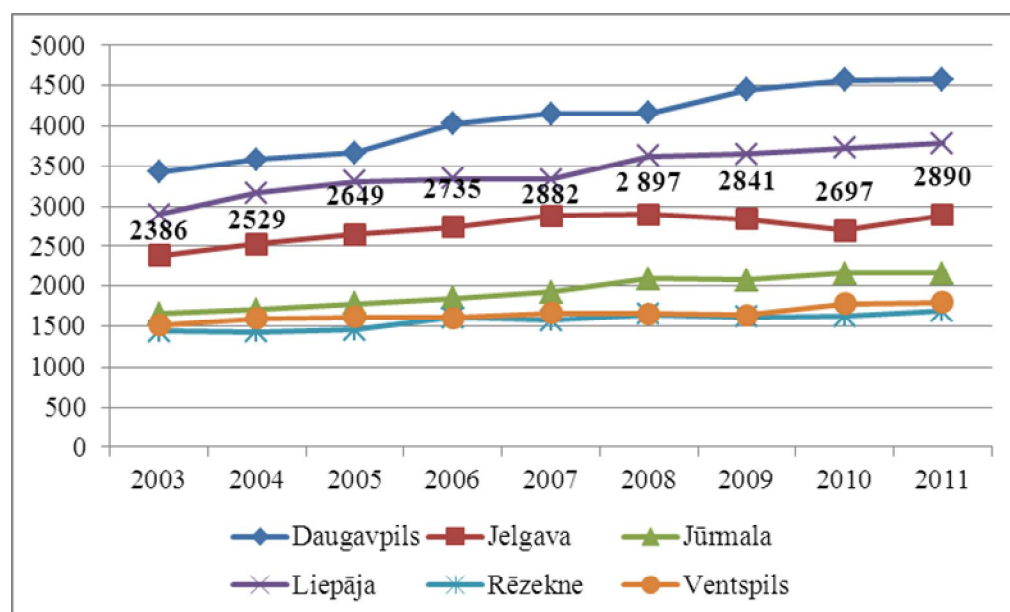
Source: Central Statistical Bureau of Latvia

Population Growth in Latvia and the Major Cities of Latvia

	Population Growth per 1000 Inhabitants			Population Growth in 9 months, 2012	
	2009	2010	2011	Population Growth	Population Growth per 1000 Inhabitants
Jelgava	-0,3	-2,4	-2,6	5	0,1
Daugavpils	-4,8	-6,7	-6,1	-456	-5,0
Jūrmala	-4,1	-4,2	-3,6	-146	-2,9
Liepāja	-2,7	-4,3	-3,8	-228	-3,0
Rēzekne	-4,1	-8,4	-5,9	-130	-4,1
Ventspils	-3,4	-4,1	-4,8	-162	-4,3
Latvija	-3,6	-4,9	-4,5	-6580	-3,2

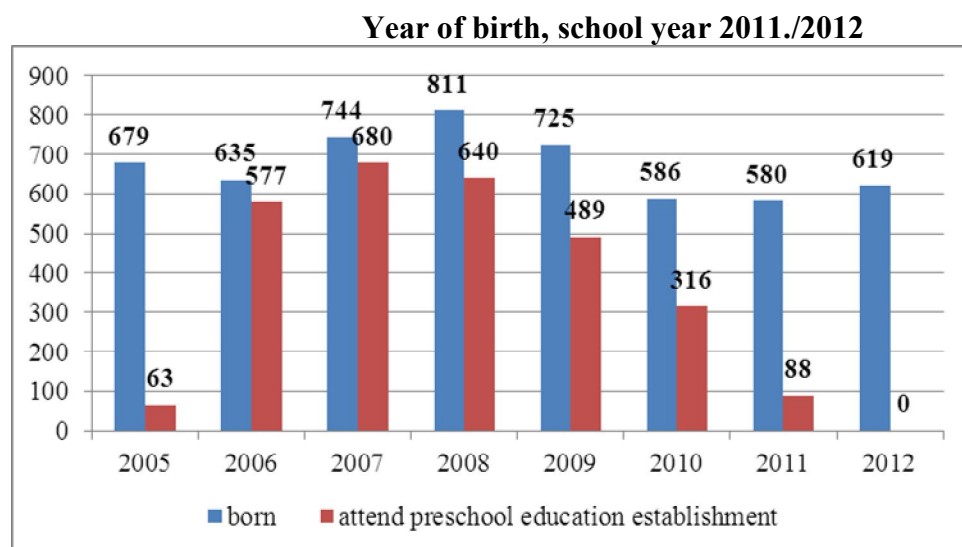
Source: Central Statistical Bureau of Latvia

Children in preschool educational establishments in the major Cities of Latvia



Source: Central Statistical Bureau of Latvia

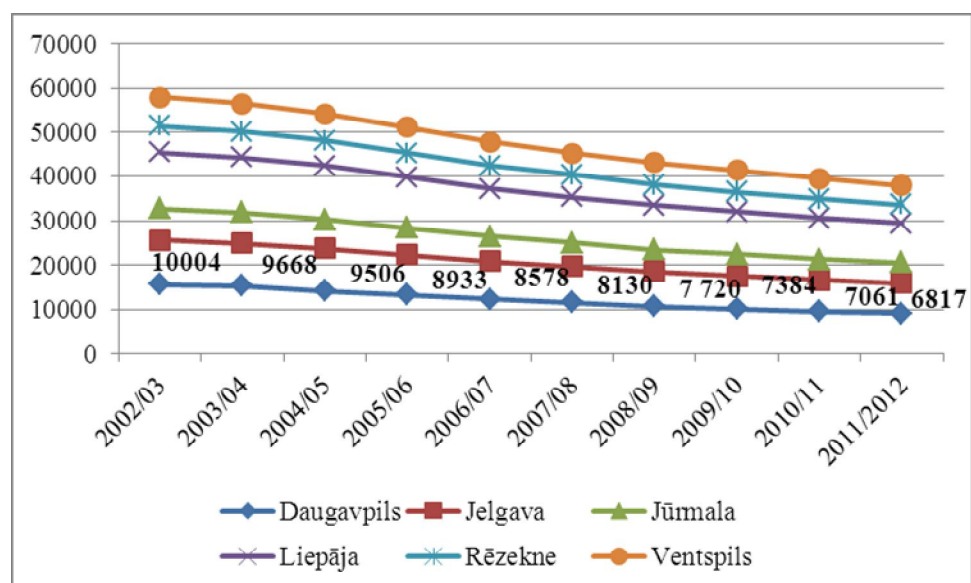
Children attending preschool educational establishments in Jelgava



Source: Jelgava city self-government

Jelgava in comparison

Pupils in comprehensive schools in cities



Source: Central Statistical Bureau of Latvia

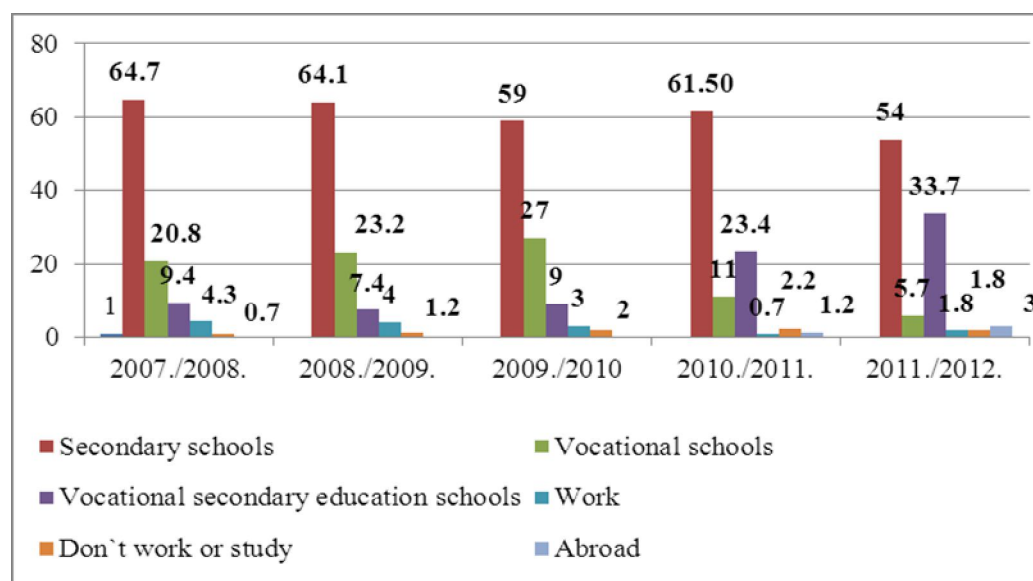
Jelgava Craft High school graduates and obtained qualification in 2012

Profession	Number of graduates
Cook	24
Pastry cook	21
Hairdresser	18
CNC machine tool programmer	14
Costume stylist	18
Retail businessman	21
Assembly locksmith	8
Assistant cook	11
Kopā	135

Source: Jelgava city self-government

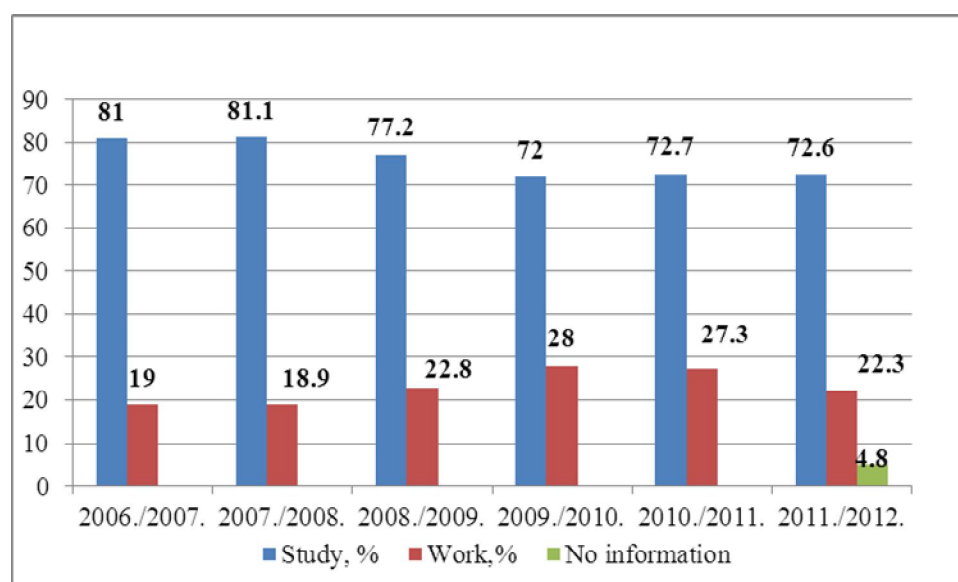
Jelgava in comparison

Number of 9th Grade Graduates from Jelgava that Continue Their Studies, %



Source: Jelgava city self-government

Number of 12th Grade Graduates from Jelgava that Continue Their Studies, %



Source: Jelgava city self-government

Jelgava in comparison

9th grade graduates from Jelgava in 2012 who continue their studies in 2012/2013 academic year

Number of 9th grade graduates	Studying		
	Establishment	Number	%
495	General secondary schools	267	54
	Vocational schools total	195	39,4
	Jelgava Crafts High school	54	10,9
	Jelgavas Technical School	63	12,7
	Vocational secondary schools	167	33,7
	Employed	9	1,8%
	Not employed nor studying	9	1,8%
	Abroad	15	3%

Source: Jelgava city self-government

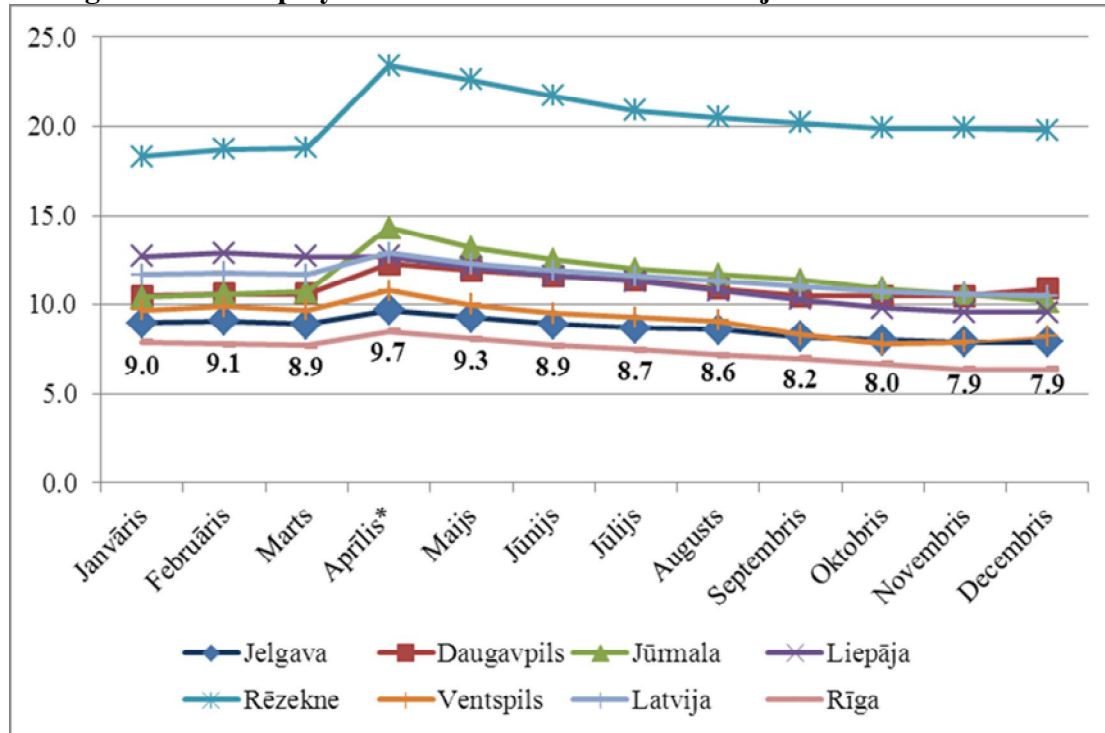
12th grade graduates from Jelgava in 2012 who continue their studies in 2012/2013 academic year

Number of 12th grade graduates	Studying		
	Institution	Number	%
531	Total number in higher educational establishments	341	64,2
	LUA	76	14,3
	1 st level higher educational establishments	28	5,3
	Vocational education programs after high school	5	0,9
	Employed	130	24,5
	Not employed nor studying	14	2,6
	Abroad	13	2,4

Source: Jelgava city self-government

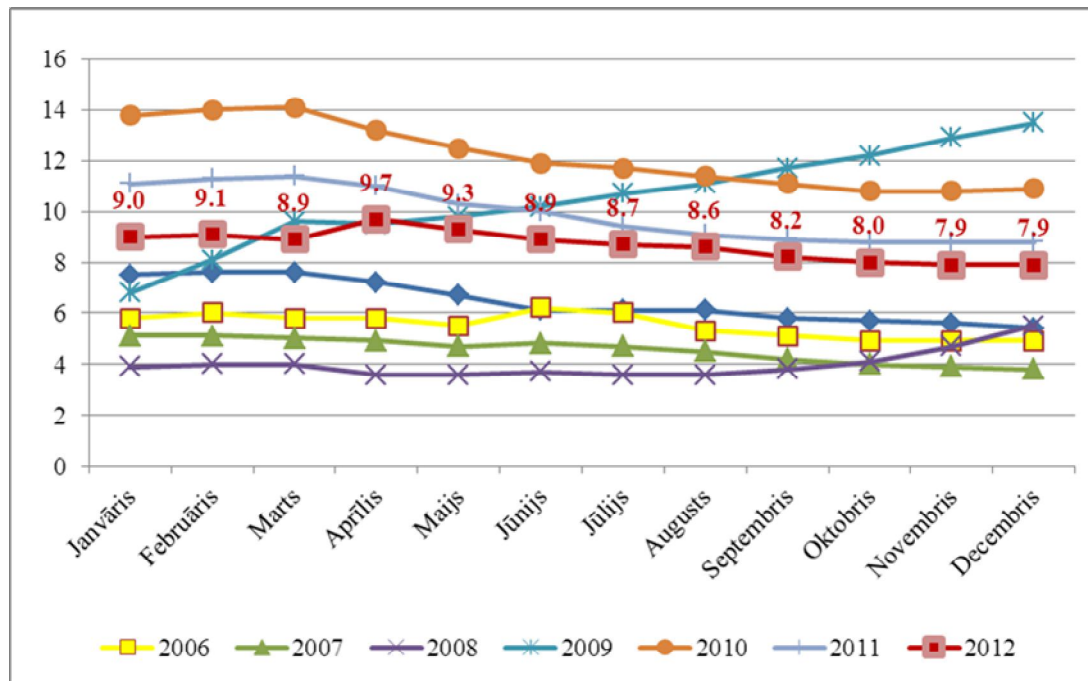
Jelgava in comparison

Registered unemployment rate in Latvia and the major Cities of Latvia in 2012, %



Source: Employment State Agency

Registered unemployment rate in Jelgava, %



Source: Employment State Agency

Jelgava in comparison

Number of Jelgava Citizens Working in Riga (Dynamics from 2002 to 2012)

Year	Number of Employees Living in Jelgava and Working in Riga
2012	13068
2011	12682
2010	12374
2009	13521
2008	19365
2007	14799
2006	13942
2005	14217
2004	13544
2003	12949
2002	12024

Source: State Revenue Service

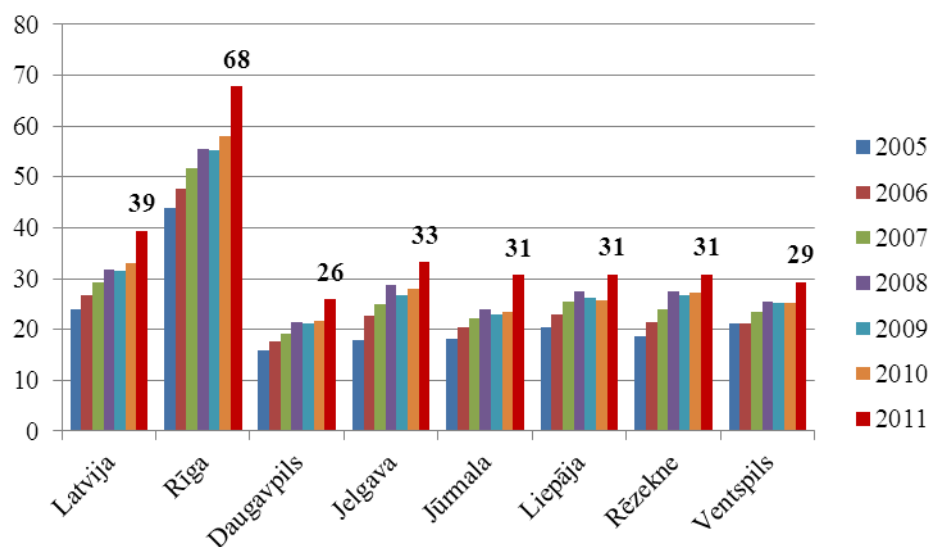
Number of Employees from Surrounding Districts Working in Jelgava-Based Companies in 2012

Employee's Declared Place of Residence	Number of Employees
Employees total	22 509
including	
Rīga	1656
Olaines county	165
Jelgava	12492
Jelgavas county	3533
Ozolnieku county	1108
Dobeles county	532
including Dobele	237
Tērvetes county	135
Auces county	102
Bauskas county	271
including Bauska	113
Jūrmala	160
Tukuma county	205

Source: State Revenue Service

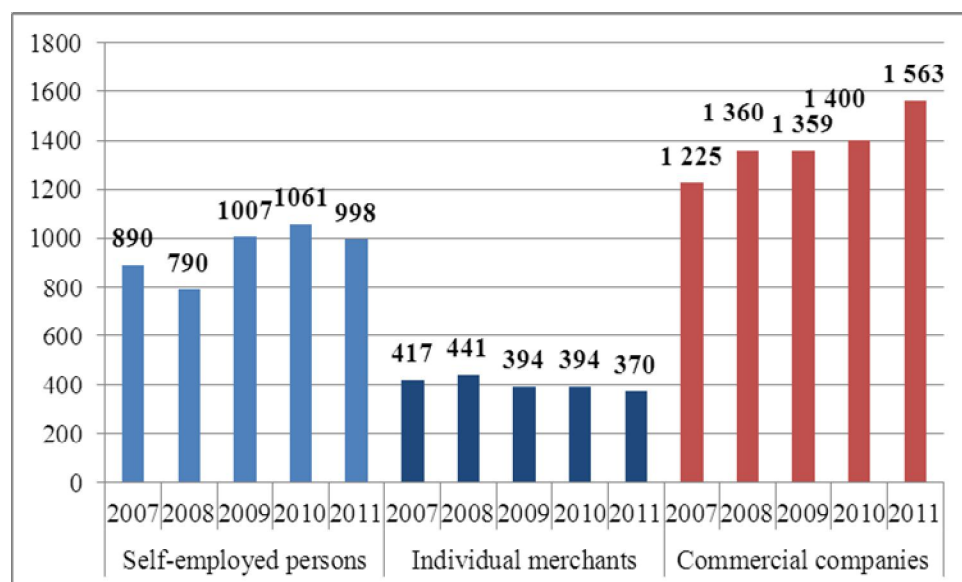
Jelgava in comparison

Active businesses in Latvia and the major Cities of Latvia (per 1000 inhabitants)

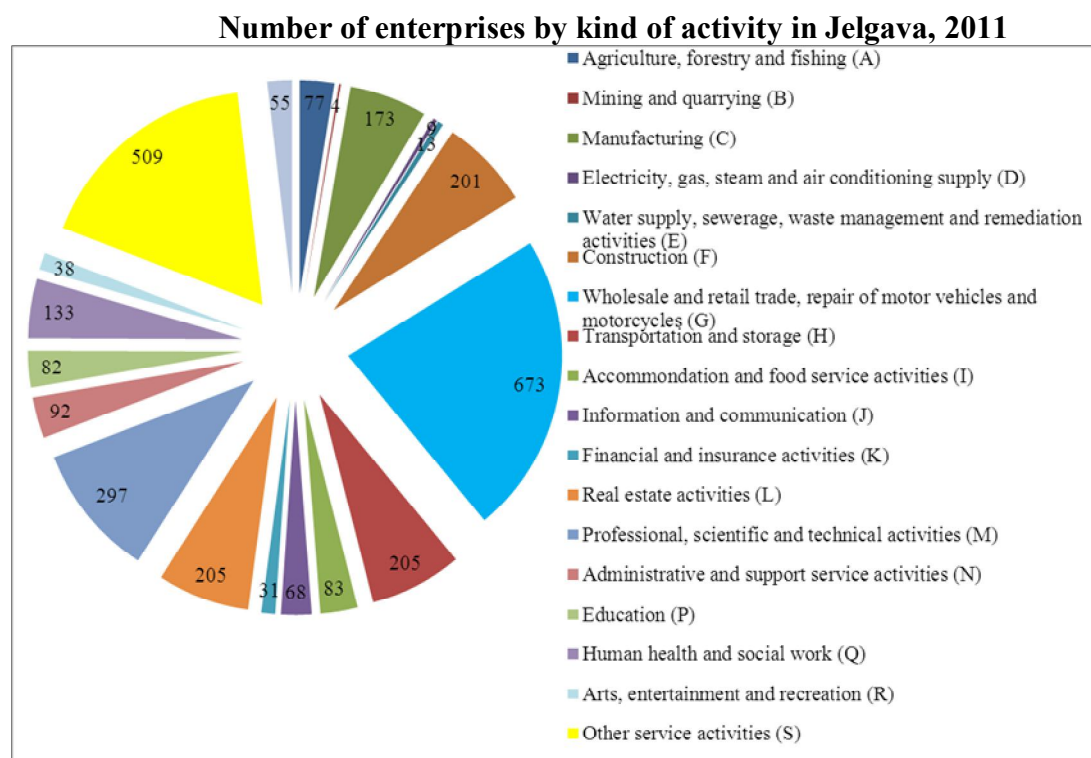


Source: Central Statistical Bureau of the Republic of Latvia

Number of enterprises by form of entrepreneurship in Jelgava

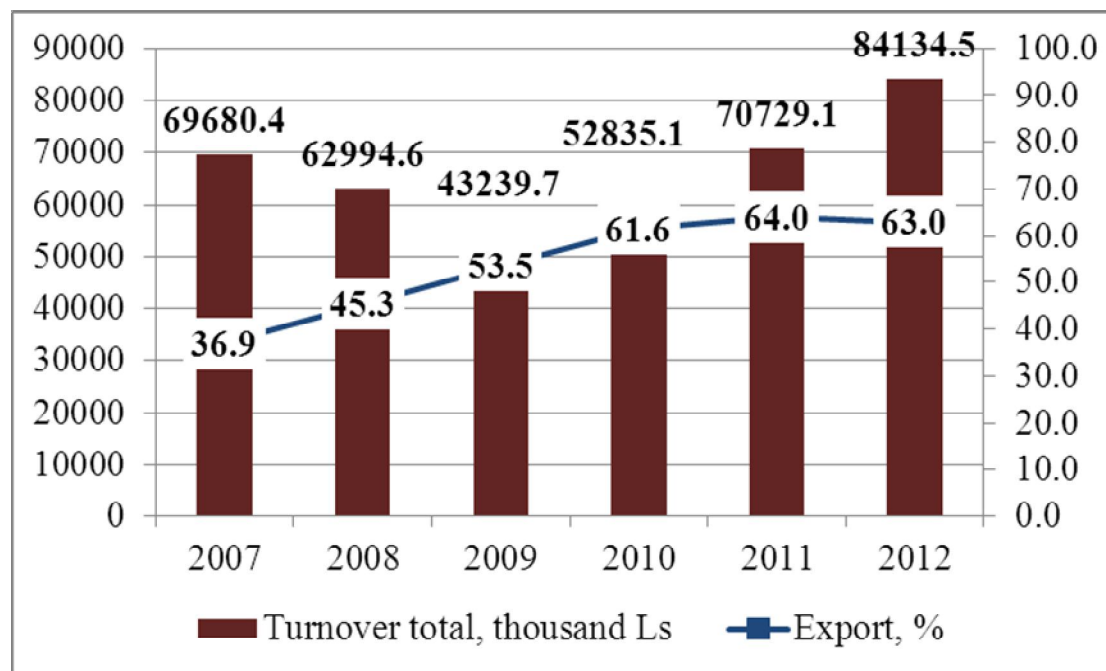


Source: Central Statistical Bureau of the Republic of Latvia



Source: Central Statistical Bureau of the Republic of Latvia

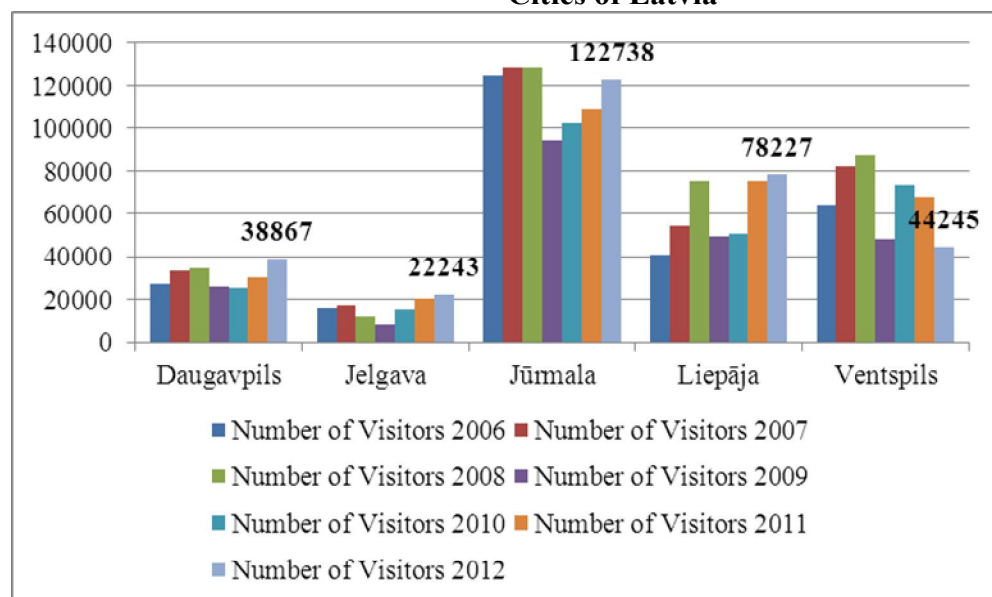
Turnover of manufacturing and export in city Jelgava



Source: Central Statistical Bureau of the Republic of Latvia

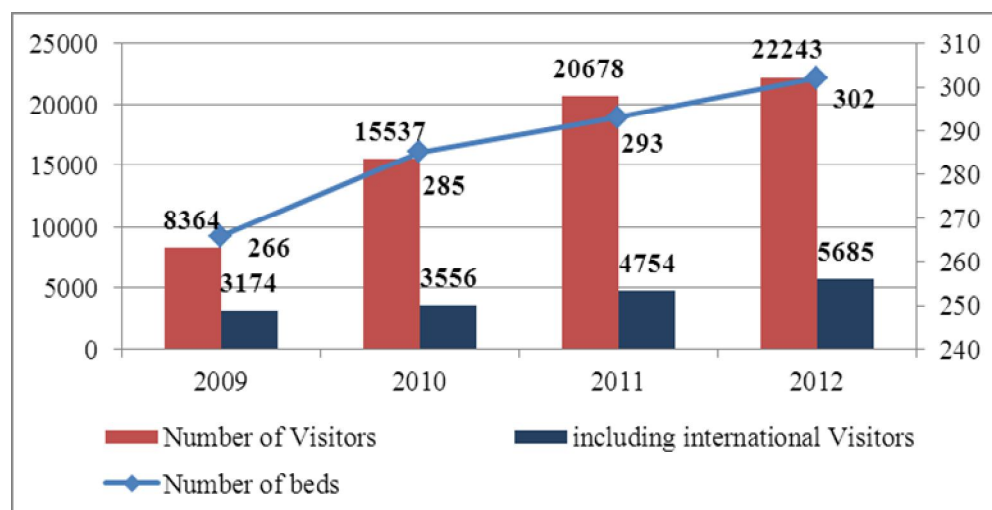
Jelgava in comparison

Number of visitors in hotels and other accommodation establishments in the major Cities of Latvia



Source: Central Statistical Bureau of the Republic of Latvia

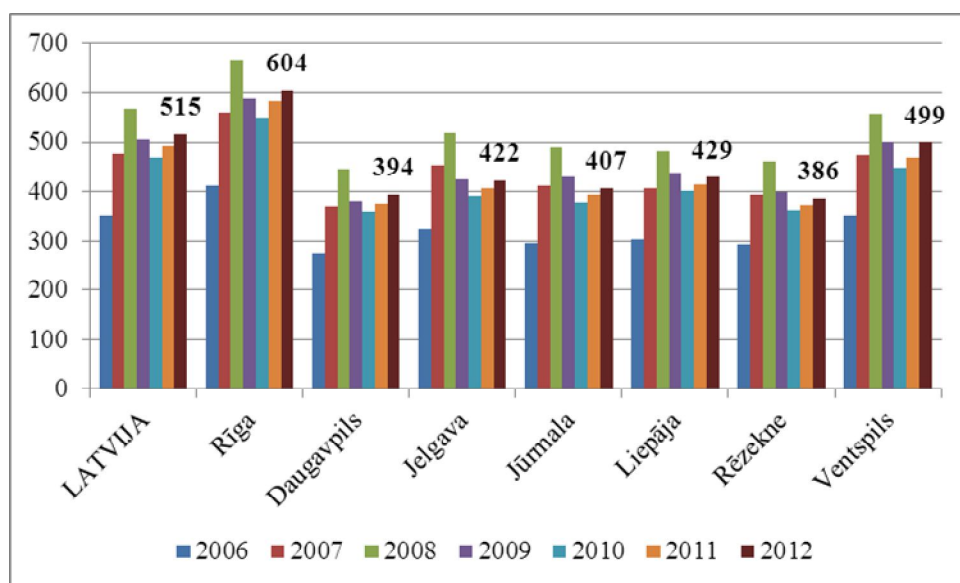
Number of beds and visitors in hotels and other accommodation establishments in Jelgava



Source: Central Statistical Bureau of the Republic of Latvia

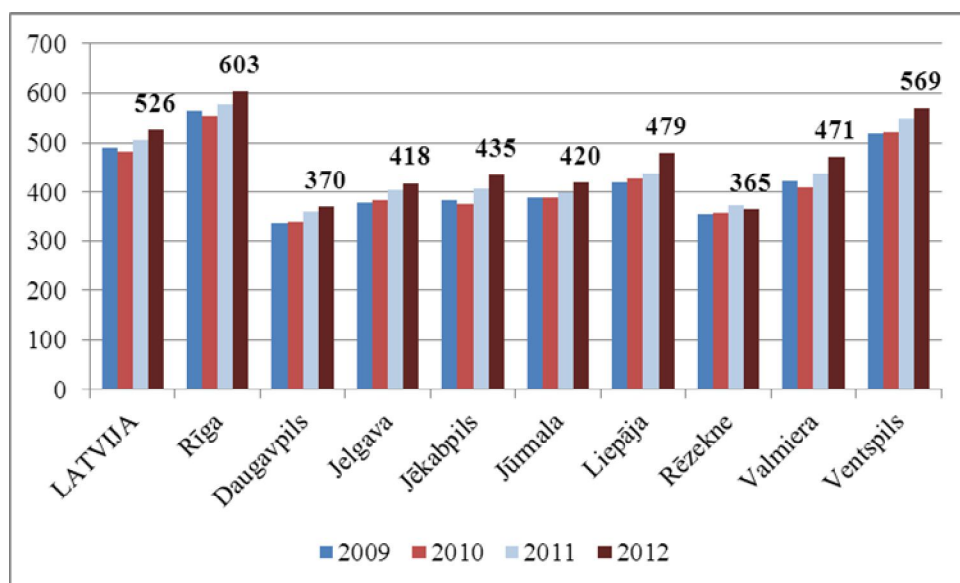
Jelgava in comparison

The average monthly gross salary in public sector in Latvia and the major Cities, Ls



Source: Central Statistical Bureau of the Republic of Latvia

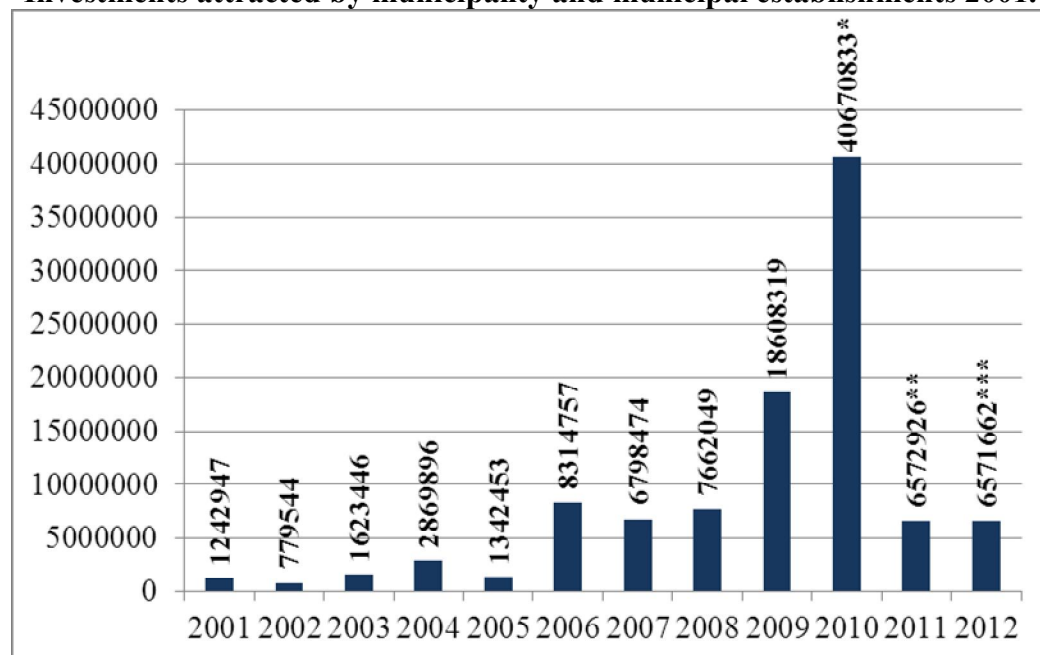
The average monthly gross wage and salary in Latvia and the major Cities, Ls



Source: Central Statistical Bureau of the Republic of Latvia

Jelgava in comparison

Investments attracted by municipality and municipal establishments 2001.-2012., LVL



* including 17 657 174 LVL – „Jelgavas Ūdens” Ltd. Cohesion fund project funding

** including 1 207 443 LVL – „Jelgavas komunālie pakalpojumi” Ltd. project funding

*** including 1 376 442 LVL - „Jelgavas Ūdens” Ltd. Cohesion fund project funding

Source: Jelgava city self-government

Funding attracted by Jelgava City self-government and its institutions in 2012 in the form of projects according to self-government functions, LVL

Territory improvement	4 093 245
Organizing communal services	1 376 442
Real estate management program	983 959
Education	86 966
Culture	6 322
Improvement of self-government administration capacity	24 728
Total	6 571 662

Source: Jelgava city self-government

Biggest projects signed in 2012

Project title	Total project funding, LVL	Funding sources	Planned results
Eliminating ecological disasters and reduction of environmental pollution in Lielupe River basin	172 848	ERAF - 85% State – 5% Municipality – 10%	Development of scenarios of ecological disaster processes and prevention; their integration in existing Geographic information system. Early notification (WEB and SMS) system development according to ecological disaster scenarios and integration with existing geographic information systems. Theoretical and practical training on ecological disaster prevention.
Reconstruction of Lietuvas Highway from Miera Street to Rūpniecības Street	3 890 941	ERAF 74% State 2.25% Municipality 23.75%	Improved street infrastructure of Lietuvas Highway from Miera Street to Rūpniecības Street
Energy efficiency measures for apartment house on 9 Raiņa Street, Jelgava	170 000	ERAF - 47% flat owners - 53%	Improved building energy efficiency
Energy efficiency measures for apartment house on 99 Kalnciema Road, Jelgava	116 000	ERAF - 47% flat owners - 53%	Improved building energy efficiency
Energy efficiency measures for apartment house on 101 Kalnciema Road, Jelgava	114 680	ERAF - 47% flat owners - 53%	Improved building energy efficiency
Energy efficiency measures for apartment house on 1 Katoļu Street, Jelgava	168 091	ERAF - 47% flat owners - 53%	Improved building energy efficiency
Energy efficiency measures for apartment house on 5 Kronvalda Street, Jelgava	133024	ERAF - 47% flat owners - 53%	Improved building energy efficiency

Source: Jelgava city self-government

Commissioned buildings and issued building permits in 2012

	Buildings	Number of issued building permits			Number of commissioned buildings		
		Total	New buildings	Reconstruction, renovation	Total	New buildings	Reconstruction, renovation
	Total buildings (I+II)	168	92	76	96	58	38
I	Buildings						
1.	Residential buildings						
1.1.	Individual houses	53	31	22	35	24	11
1.2.	Apartment houses	4	-	4	1	1	-
2.	Non-residential buildings						
2.1.	Factories	2	2	-	4	3	1
2.2.	Shops (retail objects)	7	2	5	2	-	2
2.3.	Service objects	23	5	18	10	-	10
	Other	35	23	12	17	12	5
II	Engineering structures						
1.	Streets	1	-	1	3	1	2
	Other	43	29	14	24	17	7

Source: Jelgava city self-government

Most notable objects commissioned in 2012

Address	Client, object
12 Uzvaras Street	"TONUSS" Ltd. Trade and recreation complex "TONUSS" reconstruction 3 rd stage
15 Garozas Street	Jelgava City Self-government Agency "Kultūra". Culture house "Rota" roof reconstruction
78A Ganību Street	"Zelta Vārpa Agro" Ltd. Bakery and administration building
7 Langervaldes Street	„Latvijas Piens”Ltd. Dairy processing plant buildings
6 Brīvības Boulevard	"Jelgavas pilsētas slimnīca" Ltd. Infrastructure improvement and stationary healthcare development in Jelgava City Hospital. Reconstruction of pathology department, histology laboratory and out-patient reception.
95 Viskaļu Street	” LOCITECH ESTATE” Ltd. Hangar.
8 Kristapa Helmaņa Street	Latvia University of Agriculture. External gas supply.
69 Filozofu Street	Hospital "Ģintermuiža". Reconstruction of Motivation program building.
8 Kristapa Helmaņa Street	LUA. Modernization of infrastructure in Faculty of Veterinary Medicine within a ERDF funded project.
15 Garozas Street	Jelgava City Self-government Agency "Kultūra". Culture house "Rota" façade renovation 1 st stage.
1 Brīvības Boulevard	"Statoil Fuel & Retail Latvija" Ltd. Petrol station Statoil Jelgava reconstruction.

Source: Jelgava city self-government

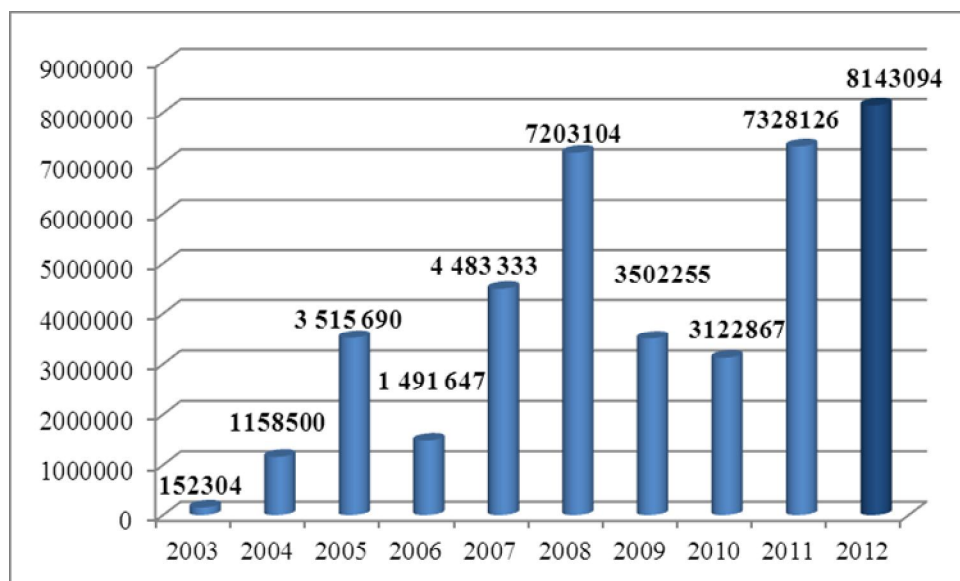
Notable objects that received building permits in 2012

Adress	Client, object
73 Rūpniecības Street	"Fortum Jelgava" Ltd. Biofuel co-generation power station
2 Bauskas Street	"Jelgavas Dzirnavas" JSC. Rye and wheat flour mill.
2 Bauskas Street	"Zemgales labība" Ltd. Grain product mix factory.
8 Kr.Barona Street	"Mārīte" Ltd. Reconstruction of production unit into a public building (demolition of subsidiary building)
Pasta Island	Jelgava City Council, Pasta Island improvement 2 nd stage
10B Katoļu Street	"RIGABURGER" Ltd. Fast food restaurant "Hesburger"
1 Brīvības Boulevard	"PREMIER ESTATES LTD". Fast food restaurant "McDonald's"

Source: Jelgava city self-government

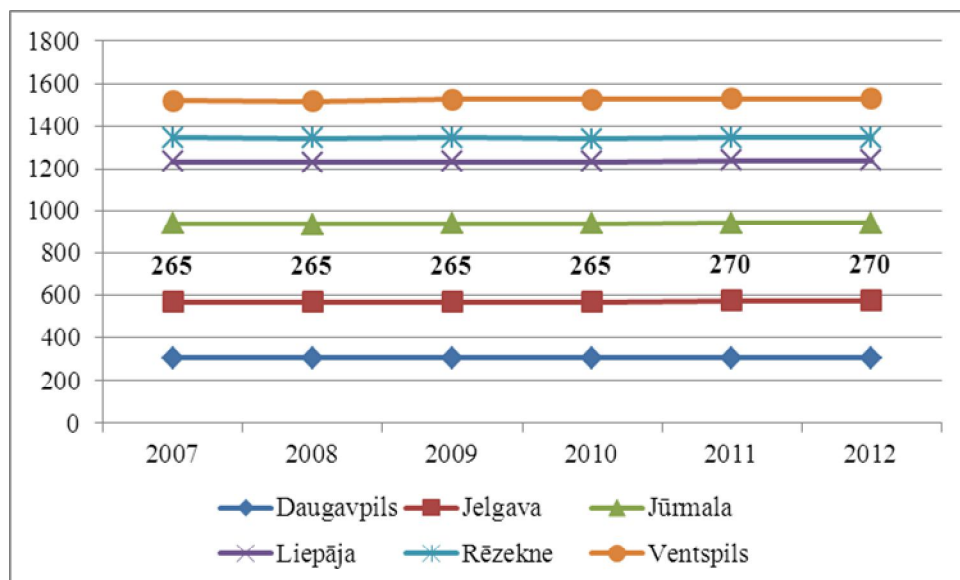
Jelgava in comparison

Finances allotted to reconstruction of streets in Jelgava 2003.-2012., LVL



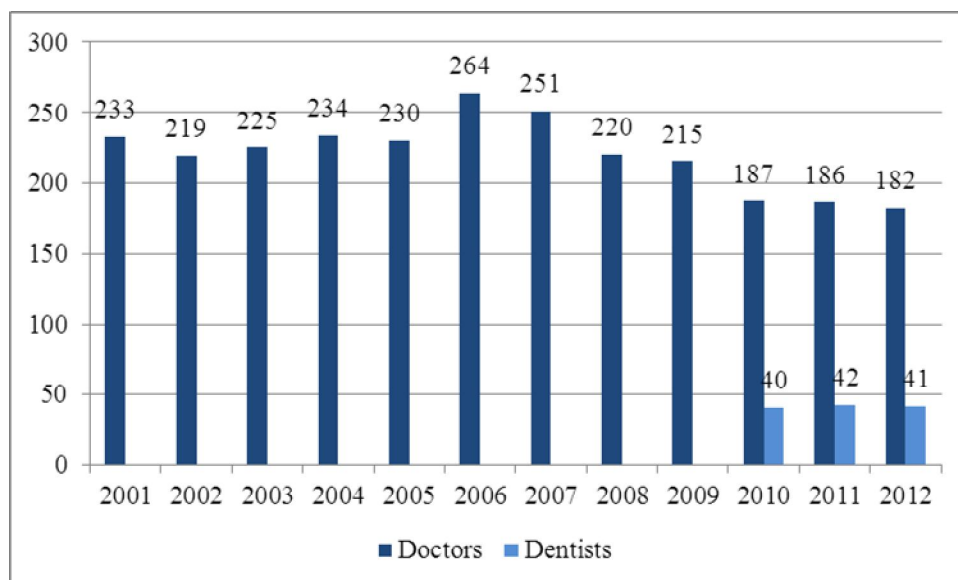
Source: Jelgava city self-government

Total length of municipality owned streets in major cities of Latvia



Source: Central Statistical Bureau of the Republic of Latvia

Number of doctors in the major Cities



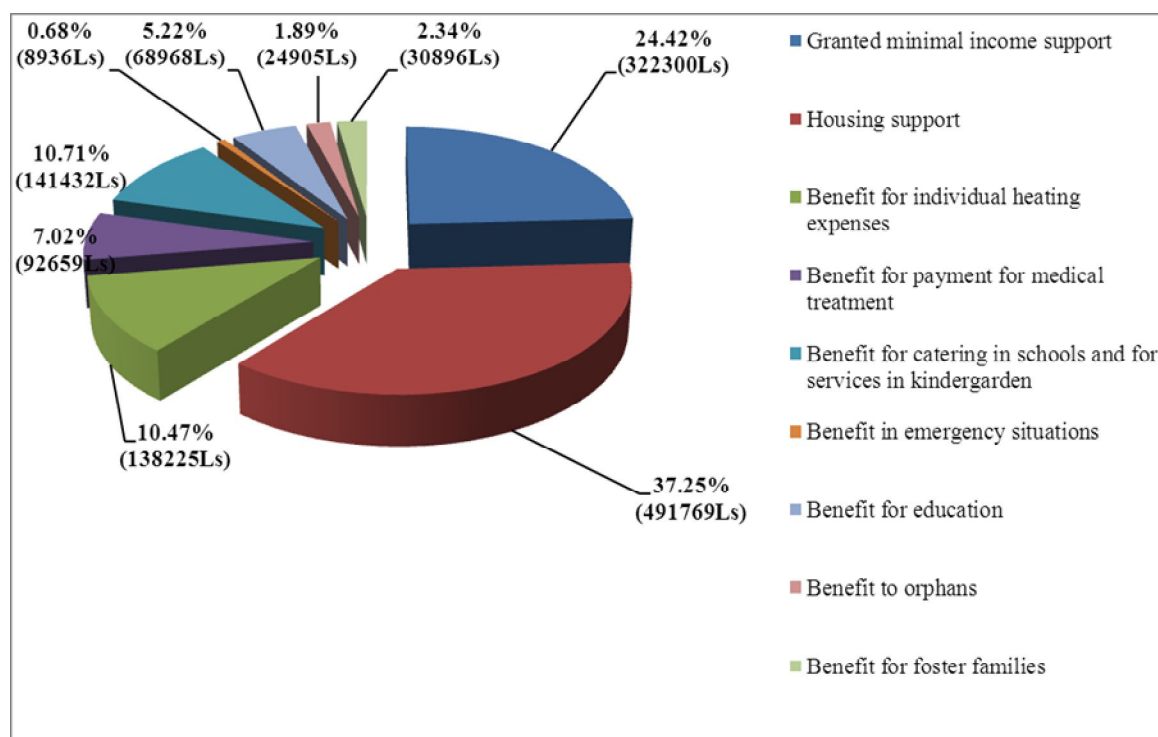
Source: Central Statistical Bureau of the Republic of Latvia

There are 43 family doctors working in the city of Jelgava and on average there are 1665 patients registered per family doctor.

There are 283 beds, 93 doctors, 124 nurse assistants and 56 maintenance workers in the city hospital.

13479 people are provided with medical care per year in the hospital with an average treatment time of 5.74 days.

Municipal social benefits in 2012



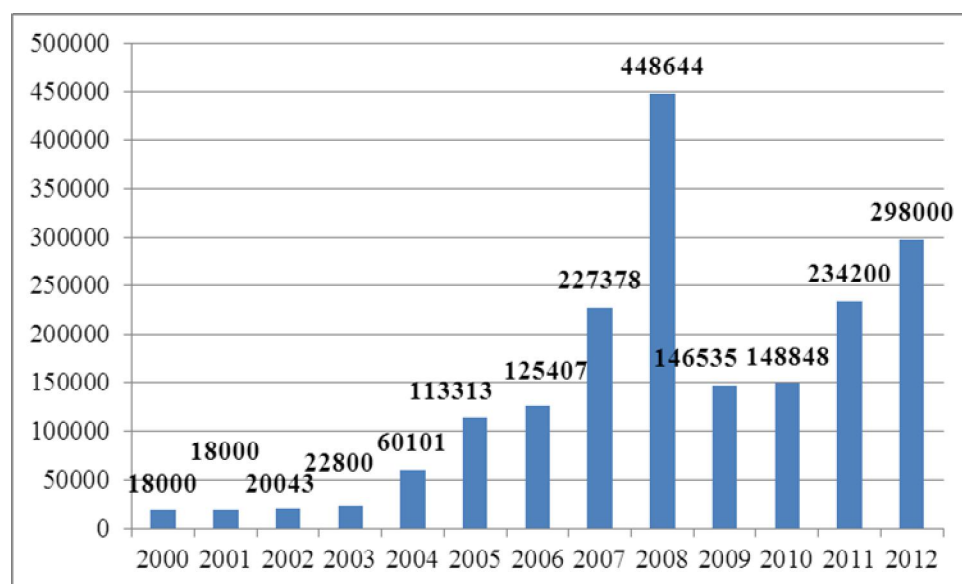
Source: Jelgava city self-government

Characterization of the families receiving social benefits evaluated by income and financial conditions in 2012

Family type	Number of families	Number of people	Social benefits (LVL)
Families with children and one or more able-bodied adult persons	1046	3907	559 641
Families with children and no able-bodied adult persons	56	156	26 904
Families without children and with one or more able-bodied adult persons	1049	1665	286 078
Families without children and no able-bodied adult persons	2070	2266	382 730
Total	4221	7994	1 255 353

Source: Jelgava city self-government

Financing allotted to culture events 2000.–2012, Ls



Source: Jelgava city self-government

Cultural events

	2008	2009	2010	2011	2012
Number of cultural events in Jelgava House of Culture	250	241	220	228	185
Number of open-air events	51	36	30	23	22
Total number of events	301	277	250	251	207
Attendance of cultural events in Jelgava House of Culture	155 321	149 730	157401	84331	108336
Attendance of open-air events	178 379	177 551	163 565	158479	123435
Total attendance	333 700	327 281	320 966	242810	231771

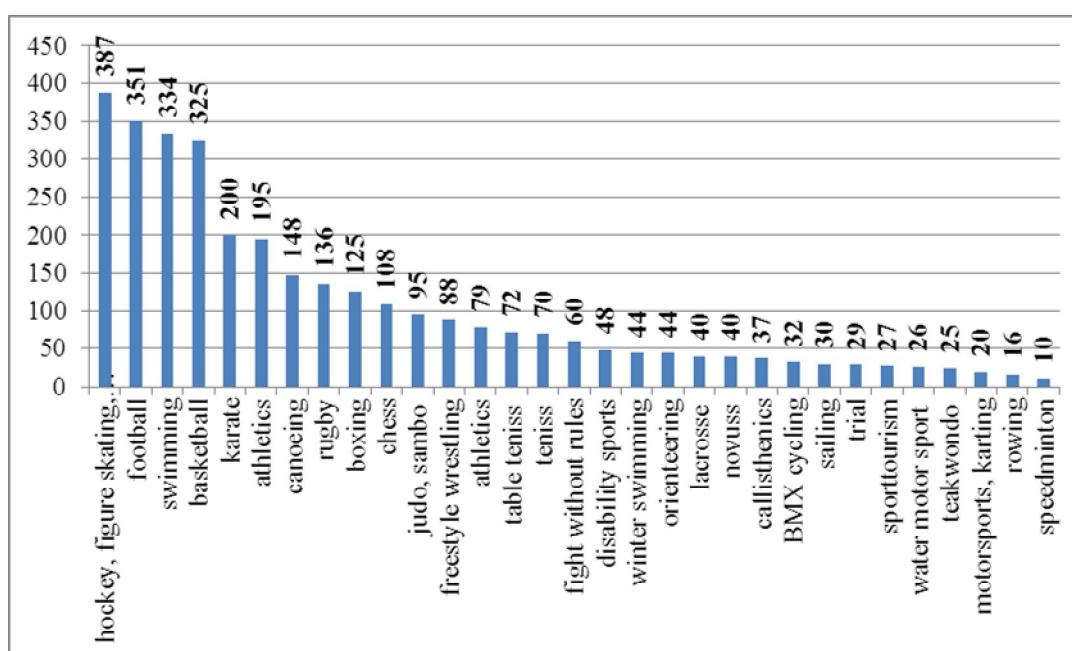
Source: Jelgava city self-government

Number of sports events organized that were co-financed by the self-government

2007	Events organized by the Sports service centre	39	111
	Competitions organized by sports clubs and sports schools	72	
2008	Events organized by the Sports service centre	45	130
	Competitions organized by sports clubs and sports schools	85	
2009	Events organized by the Sports service centre	42	132
	Competitions organized by sports clubs and sports schools	90	
2010	Events organized by the Sports service centre	40	135
	Competitions organized by sports clubs and sports schools	95	
2011	Events organized by the Sports service centre	50	144
	Competitions organized by sports clubs and sports schools	94	
2012	Events organized by the Sports service centre	52	151
	Competitions organized by sports clubs and sports schools	99	

Source: Reports of sport clubs

Number of Jelgava citizens participating in sports club activities in 2012, sorted according to type of sports



Source: Reports of sport clubs

Jelgava compared to the other large cities in Latvia in beginning of 2012

	Population	Area, km²	Density, people/km²
Rīga	650478	304	2139.7
Daugavpils	91478	72	1270.5
Jelgava	58280	60	971.3
Jēkabpils	24017	25	960.7
Jūrmala	50616	100	506.2
Liepāja	75372	68	1235.6
Rēzekne	31559	17	1753.3
Valmiera	24722	18	1373.4
Ventspils	38068	58	656.3

Twining Cities

Pärnu (Estonia)

Cooperation agreement was signed in 1957. Collaboration occurs within the realms of education and culture. The city covers an area of 32 km². The population is approx. 43 500.

www.parnu.ee



Siauliai (Lithuania)

Cooperation agreement was signed in 1960. Central areas of collaboration – education, culture, sports, social welfare and addiction prevention. Area 69,5 km², population of about 130 000.

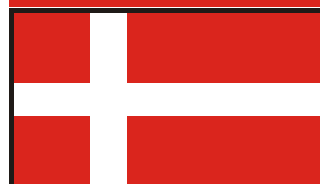
www.siauliai.lt



Vejle (Denmark)

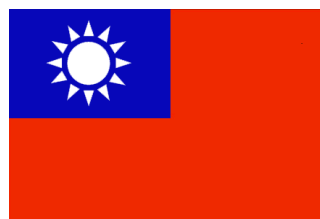
The cooperation agreement was signed in 1992. Collaboration occurs within the realms of education and experience exchange of municipality workers. The city is located in the continental part of Denmark, the population is approx. 52 500.

www.vejle.dk



Shin-Ying (Taiwan)

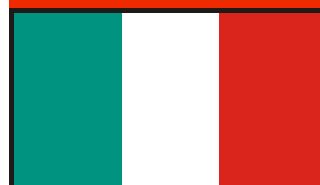
The cooperation agreement was signed in 2000. It foresees cooperation in the areas of art and culture. The city is located in the northern part of Tainan County and is the administrative centre of the province. Area – 38.54 km², population – approx. 75 000.



Alcamo (Italy)

The cooperation agreement was signed in 2002. It predicts collaboration in supporting the realms of culture, sports and social welfare. It is planned to develop trade commerce and to encourage entrepreneurship. The Rotari clubs of Jelgava and Alcamo are actively cooperating.

www.alcamo.it



Baranovichi (Belarus)

The cooperation agreement was signed in 2003. The central areas of collaboration – education, culture, sports, prevention of addiction. Stimulating cooperation within the realm of economics is also planned.

www.baranovichy.by



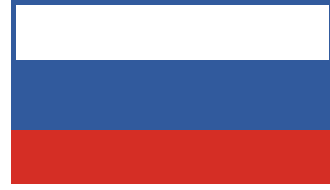
Twining Cities

The Southern Administrative Region of Moscow (Russia)

The protocol of intent was signed in 2003, laying the foundations for cooperation in the realm of engineering. Currently there is collaboration with the ZIL factory and preparations are being made in order to begin manufacture of mid-carrying capacity vehicles in the “AMOPlant” factory in Jelgava.

The population in the southern region of Moscow is approximately 1 600 000 people.

www.mos.ru



Magadan (Russia)

The cooperation agreement was signed in 2006, foreseeing collaboration in the realms of culture, education, economics, sports, tourism, science and social politics. Besides, the city contains a Latvian Diaspora (Latvians or their descendants were sent there in the years of the USSR occupation) that would love to maintain strong contacts with Latvia.

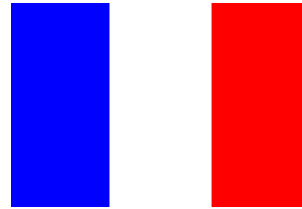
www.magadan.ru



Rueil-Malmaison (France)

The partnership began in France during the festival “Surprising Latvia” and was strengthened during the “Spring of France” festival in Latvia. The cooperation agreement was signed in 2007, predicting collaboration in the realms of economics, entrepreneurship, education, science and culture. There is collaboration between Jelgava State Gymnasium and Richelieu Lyceum.

www.mairie-rueilmalmaison.fr



Berlin (Germany)

An agreement on partnership was signed in 2003, intending a close cooperation in the realm of municipal economy and in the development of public transport in Zemgale. The agreement also indicates the purpose of stimulating investment attraction to Zemgale and the strengthening of bonds in the areas of culture and education.

www.berlin.de



Nova Odessa (Brazil)

The protocol of intent was signed in 2007, predicting collaboration in many aspects, including providing support for organizations, companies, state institutions and non-governmental organizations, assisting the establishment of mutual relations and promoting the understanding of the cultures and history of both countries. Furthermore, Nova Odessa contains the largest community of Latvians in Brazil.

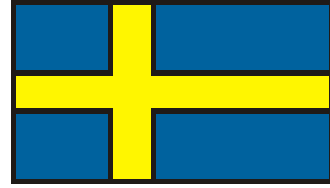
www.novaodessa.sp.gov.br



Hällefors (Sweden)

The cooperation agreement was signed in 2004. Collaboration is being realized in the forming of the city environment and the education of landscape architects. A partnership with the Faculty of Food Technology from the Latvia University of Agriculture has been established in the realm of culinary arts. Cooperation in the realm of culture and social affairs is predicted in the future.

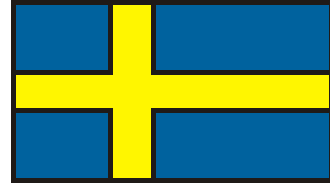
www.hellefors.se



Nacka (Sweden)

A suburb of Stockholm with a population of approx. 91 600. Originally a partnership was established within the boundaries of EU-financed projects. Currently a close collaboration has formed and there is exchange of experience in the areas of municipality administration, environment, education, culture, sports and prevention of addiction. Collaboration with youth (for example, the students of Spidola Gymnasium) and civic organizations (“Parents for Jelgava”) has also begun.

www.nacka.se



Białystok (Poland)

Białystok is the largest and one of the most historically rich cities in north-east Poland. Area – 102 km², population – approx. 294 400. An active collaboration has been established in the exchange of experience for the municipalities as well as the realm of culture. The partnership is strengthened by the Jelgava chapter of the Association of Poles in Latvia.

www.bialystok.pl



Ivanofrankovska (Ukraina)

The cooperation agreement was signed in 2007 in order to form a partnership in the areas of culture, education, entrepreneurship, municipal economy and social welfare, and to realize joint EU project.

www.mvk.if.ua



Useful information

Notable cultural events in Jelgava City in 2013

Date	Event	Location
08.02.- 10.02.2013.	15th International Ice Sculpture Festival	Uzvaras Park
31.03.2013.	Easter Promenade	Pils Park
11.-12.05.2013.	Plant Days	Pils Park
23.-26.05.2013.	Jelgava City Festival	Jelgava
15.- 16.06.2013.	7th Annual Sand Sculpture Festival "Summer Signs"	Uzvaras Park
22.06.2013.	Midsummer	Duke Jacob Square, Little Pils Island
24.08.2013.	XII International Festival of Milk, Bread and Honey	Raiņa Parks, Uzvaras Park, Lielupe River
02.09.2013.	1 st of September”	Uzvaras Park
07.09.2013.	3 rd Metal Festival	Uzvaras Park
21.09.2013.	Autumns Fair	Duke Jacob Square
11.-13.10.2013.	Festival of theatres	Jelgava House of Culture
18.11.2013.	Celebration of Proclamation of the Republic of Latvia	Duke Jacob Square, Jelgava House of Culture
05.12.2013.	Lighting of Main Christmas Tree	Duke Jacob Square
31.12.- 01.01.2014.	New Year’s Eve	Jelgava House of Culture

Useful information

Notable sports events in Jelgava City in 2013

Date	Event	Location
3-7 January	2 nd European Volleyball Championship qualification tournament U18	ZOC
24-25 January	Jelgava Long distance swimming Winter championship 2013	LUA Swimming pool
25 January	European Youth Basketball League (EYBL) 3 rd stage for girls	ZOC
1 February	„Sports laureate 2012”	Jelgava House of Culture
23-24 February	Jelgava open artistic gymnastics championship „Baltic Flower 2013”	ZOC
1-3 March	Jelgava City Open Boxing Championship	ZOC
9 March	Jelgava City Open Powerlifting Championship	Jelgava Sports Hall
16 March	Jelgava City Council Dance sport Cup	ZOC
27-30 March	UEFA European Futsal Championship Qualification Tournament	ZOC
April	Jelgava City Open Volleyball Championship	Jelgava Sports Hall
May	U. Samsons Commemorative track-and-field competition	ZOC
1 May	May Street Relay	
25 May	Latvian Wakeboard Championship 1 st Stage	Lielupe Promenade
25 May	Jelgava Yacht club season opening regatta	Yacht Club
26 May	Jelgava City Open BMX Championship	ZOC
26 June	Jānis Lūsis Javelin Throw Cup	ZOC
12-14 July	International Children Football Festival „City Cup 2013”	ZOC
July	Jelgava Rowing Championship	Ro
August	„Mītava Open 2013” Minifootball Tournament Final	ZOC
September	Jelgava City Council Men’s Basketball Cup	ZOC
21 September	„Pair Cup” and Latvian Rowing Championship for pair long distances	Rowing base on Pils Island
27 September	Olympic Day 2013	ZOC
27-28 September	Jelgava City Open Freestyle Championship Championship 2013	Jelgava Sports Hall
October	Jelgava City Council Volleyball Cup	Jelgava Sports Hall
5 October	International Boxing Tournament „Grand Prix”	Sports house, 6 Raiņa Street
2-3 November	Jelgava City Open Judo Championship	ZOC
1-2 November	Latvia Sprint Swimming Championship	LUA Swimming pool
23 November	Jelgava Karate-do Championship	LUA Swimming pool
December	„Heijā, heijā, pulkā nāc!” pre-school children and family sports festival	Jelgava Sports Hall

Useful information

Help

Service	Phone No.
Fire-fighters and rescue	112
Police	110
State Police Zemgale Region Department Jelgava precinct	63004200
Municipal police	63028550
Ambulance	113
Gas Emergency Service	114
Home Guard	67072684
Municipal Operative Information Centre	8787

Communication, transport, services

Service	Phone No.
Directory inquiries	1180
“Lattelecom” client service	177
“Latvijas Mobilais Telefons” 24-hour service	80000076
“Tele 2” 24-hour service	“Tele 2” 24-hour service
Jelgava bus terminal	63022639
Jelgava Bus Fleet	63022513
Water supply and sewage	63021091
NĪP Emergency service	63020000
Jelgava regional tourism centre	63005445

Useful information

Jelgava City Council

11 Lielā Street, Jelgava, LV-3001
Phone no.: 63005522 (Information agency)
Fax: 63029059
e-mail: dome@dome.jelgava.lv
Home page: www.jelgava.lv

Education Department

22 Svētes Street, LV-3001
Phone no.: 63012460
Fax: 63012490
e-mail: izglitiba@izglitiba.jelgava.lv
Home page: <http://www.jip.jelgava.lv/>

“Kultūra” Department

5 Kr.Barona Street, Jelgava, LV-3001
Phone no.: 63023461
Fax: 63084676
e-mail: kultura@kultura.jelgava.lv
Home page: <http://www.kultura.jelgava.lv/>

Social Affairs Authority of Jelgava City

9 Pulkveža O.Kalpaka Street, Jelgava, LV-3001
Phone no.: 63007489
Fax 63007536
e-mail: soc@soc.jelgava.lv
Home page: <http://www.jelgava-soclp.lv/>

«Pilsētsaimniecība» Department

16a Pulkveža O.Kalpaka Street, Jelgava, LV-3001
Phone no.: 63084470
Fax: 63023869
e-mail: pilsetsaimnieciba@pilsetsaimnieciba.jelgava.lv
Home page: <http://www.pilsetsaimnieciba.lv/>

Operative Information Centre

Hotline :8787

Zemgales Region Human Resource and Competences Development Centre

33 Svētes Street, Jelgava, LV-3001
Phone no.: 63082101
Fax: 63007033
e-mail: zrkac@zrkac.jelgava.lv
Home page: www.zrkac.lv

Sports service centre

6 Raiņa Street, Jelgava, LV-3001
Phone no.: 63027504
Fax: 63027503
e-mail: sports@sports.jelgava.lv
Home page: www.sports.jelgava.lv