



JELGAVA
City
○
JELGAVA
County
○
OZOLNIEKI
County

TOURIST GUIDE





 **JELGAVA**
(MITAU)

Jelgava, Katoļu Street, beginning of 20th century.

Did you know?

- Jelgava is the fourth largest city in Latvia with a history that spans over 755 years; the centre of Zemgale region for education, culture and economy. The former name of Jelgava is Mitau, which was still used as late as 1940, until the name of the city – Jelgava – was officially announced in documents.
- The city dates as far back as 1265, when the Master of the Livonian Order Konrad von Mandern built an Order castle on an island between the rivers Lielupe and Driksa. In 1573 Jelgava acquired the rights of a city and a coat of arms. The symbol of the city – an elk – is present in the city's coat of arms to this day.
- Jelgava flourished during the times of the Duchy of Courland and Semigallia, later becoming the capital of the Courland Governorate. The future heads of the independent states of Latvia, Lithuania and Poland have studied here. During World War II most of the historical buildings in the city were destroyed, however it was rebuilt in the architectural style of the post-war period. In our days the city is a mix of the ancient and the new.
- Jelgava is a student city – Jelgava Palace, located in the city, houses Latvia University of Life Sciences and Technologies. Jelgava is a venue for several international festivals – the International Ice Sculpture Festival and the International Sand Sculpture Festival take place there annually, along with the unique tetra pack regatta on the Lielupe River.

Facts

- Population: 60 941
- It is the fourth largest city in Latvia by the population
- Territory: 60,3 km²
- Jelgava was founded in 1265
- In 1573 Jelgava acquired the rights of a city and a coat of arms
- Capital of the Duchy of Courland and Semigallia from 1578 to 1795



Lear more – listen to the story of Jelgava! On the website www.visit.jelgava.lv you can listen to 25 tales about Jelgava and destinations located in Jelgava in the Audioguide section.

www.jelgava.lv 
Jelgava
Pilsēta izaugsmei!



View of J. Čakstes Boulevard and Mītava Bridge, 2019.



JELGAVA CITY

○
*exploration
and discoveries*

1 JELGAVA HOLY TRINITY CHURCH TOWER

- The Holy Trinity Church was built in 1574 and is the first newly built Lutheran church in Europe; destroyed during World War II, but its bell tower still remains;
- In 2010 the bell tower was restored and has become the most popular tourist attraction in Jelgava with an interactive multi-media exposition about the first presidents of Latvia, symbols of Jelgava and the most important historical events, the Holy Trinity Church and the national costume of Zemgale;
- A sightseeing platform at the height of 37 metres, an exhibition hall, a restaurant, a conference room and the tourism information centre;
- Guided tours are offered, along with creative workshops.

Akadēmijas iela 1, +371 63005445, 63005447, www.visit.jelgava.lv

2 JELGAVA HISTORY AND ART MUSEUM OF ĢEDERTS ELIASS

- The building that houses the museum was constructed in 1775 as Academia Petrina – the first higher education institution in the territory of Latvia founded by the last Duke of Courland and Semigallia – Peter von Biron;
- Since 1952 the building houses the Museum of Jelgava City that carries the name of the great Latvian painter Ģederts Eliass (1887-1975);
- Interactive history exhibitions, Ģ. Eliass paintings, art and historical exhibitions, educational programmes for various age groups.
- Offers an opportunity to climb the tower and enjoy panorama view of the surroundings from a balcony.

Akadēmijas iela 10, +371 63023383, www.jymm.lv

3 JELGAVA PALACE

- Jelgava Palace is the largest Baroque style palace in the Baltic states; built in 1738 based on the project by the famous Russian court architect F.B.Rastrelli, today it houses Latvia University of Life Sciences and Technologies;
- A museum is situated in the palace; guided tours are offered around the palace;
- It offers entertaining and educational programmes – Hot Chocolate in the Duke's Residence and Dorothea's Love Letter Workshop.

Lielā iela 2, +371 63005617, www.jelgavaspils.lv

4 VAULT OF THE DUKES OF COURLAND

- The Vault of the Dukes of Courland at Jelgava Palace is the largest burial place of its kind in Latvia, one of the few burial places of dynasties of rulers available for viewing in the world;
- 24 members of the Kettler dynasty and six representatives of the Biron dynasty have been buried here from 1569 to 1791 – including the dukes and their family members;
- The historical exhibition of the vault includes information about persons laid to rest there, costumes, in which they were buried, fragments of textiles and other historical evidence.

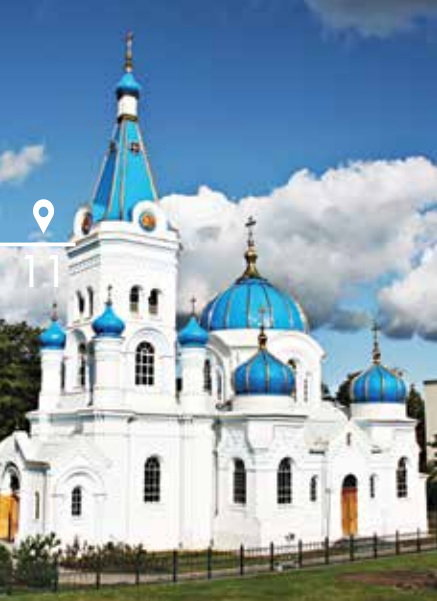
Lielā iela 2 (Jelgava Palace building, entrance from the Palace Park), +371 63962197, 26499151 (open to visitors from 1 May to 31 October), www.rundale.net/kapenes

5 MEMORIAL MUSEUM OF ĀDOLFS ALUNĀNS

- The memorial house of Ādolfs Alunāns, the father of Latvian theatre, in which he spent the last two years of his life from 1910 to 1912;
- Casual ambience of the beginning of the 20th century, exhibition Jelgava and Alunāns with interactive elements, art exhibitions;
- A possibility to try on the costumes and the role of an actor on the small stage reading anecdotes and learning old Latvian words.

Filozofu iela 3, +371 63021180, www.alunans.lv





6 JELGAVA EXHIBITION OF LATVIAN RAILWAY HISTORY MUSEUM

- Exhibition about the Jelgava railway hub – one of the oldest and most important railway hubs in Latvia, about the narrow-gauge railway – Mazā metāla sirds (the Little Heart of Metal);
- Excursions to the former locomotive depot in Jelgava, a birthday party in the museum, workshops, cartoons and games about the safety on railway for schoolchildren are offered.

Stacijas iela 3, +371 67239494, www.railwaymuseum.lv

7 SOVIET UNION CAR COLLECTION ANRU MOTORS *

- A private collection of more than 20 cars from the Soviet period such as – VAZ, GAZ, ZAZ, RAF, Moskvitch and other;
- The exhibition can be viewed 24 hours a day through the glass windows free of charge.

Garozas iela 15a, +371 29553492, www.anrumotors.lv

*guided excursions must be booked 5 days in advance

8 CANDY WORKSHOP KARAMEĻU DARBŅĪCA

- The sweetest, most colourful place in Jelgava, most popular among the children;
- Candy making show, the possibility to make one's own candy, a shop, where visitors can buy candies.

Rūpniecības iela 1a, +371 29851426 25664748, www.karameludarbница.lv

9 ST. ANNA'S LUTHERAN CHURCH

- The masonry church building was erected in the first half of the 17th century, it is the oldest church in Jelgava still standing today;
- The church is a venue for concerts of spiritual and classical music and boasts the largest organ in Zemgale region.

Lielā iela 22a, +371 29123969, www.jelgavasannasbaznica.lv

10 CATHOLIC CATHEDRAL OF THE IMMACULATE VIRGIN MARY IN JELGAVA

- The cathedral was designed by the architect K.E.Strandmanis and built in 1906 in pseudo-Gothic style; it is splendidly decorated, with a bas-relief The Last Supper above the entrance;
- The inside of the church burned during World War II; restoration was completed only in 1992.

Katoļu iela 11, +371 63021550, www.jelgavaskatedrale.lv

12 MONUMENT TO JĀNIS ČAKSTE, THE FIRST PRESIDENT OF LATVIA

- A monument to the president of Latvia Jānis Čakste (1859-1927), who was born near Jelgava, went to school and worked in Jelgava.

Lielā iela 1a (near the Holy Trinity Church Tower)

11 ST. SIMEON'S AND ST. ANNA'S ORTHODOX CATHEDRAL

- The church was built based on the design by the architect N.Chagin from 1890 to 1892 partially using the foundation and the altar of an older church designed by F.B.Rastrelli and built in 1774;
- Its interior is characteristic of orthodox churches and very splendid, it has 9 bells in the bell-tower, the biggest bell weighs 830 kg.

Raiņa iela 5, +371 63020207

13 MONUMENT TO THE LIBERATORS OF JELGAVA LĀČPLĒSIS

- The monument serves as a memorial to liberation of Jelgava from the Bermont's army in 1919. In 1992 the sculptor Andrejs Jansons restored the monument "Lāčplēsis (Bear-slayer) and the Dark Knight" created by his father Kārlis Jansons in 1932.

Station Park

14 MEMORIAL SIGN IN HONOUR OF THE SINGER NORA BUMBIERE

- The sculptor Kārlis Īle created the sculpture commemorating the popular singer of the 1970s Nora Bumbiere, who was a local of Jelgava.

The square behind the Jelgava Culture House





JELGAVA CITY

relaxing moods



15

- The Palace Island's floodland meadows (the island is located at the junction of the rivers Lielupe and Driksa) have a substantial diversity of bird and plant species, and approximately 70 wild horses have found a home there. Since summer 2018 visitors can climb a 19,2 metres high wooden observation tower to watch the wild horses, birds and the panoramic view of the Lielupe floodland meadows.

It is advisable to visit the floodland meadows for the first time on a guided tour to learn about the wildlife and the wild horses living in the meadows, phone +371 20264343

**The largest part of the island behind the watchtower is closed from 1 April to 30 June to protect the birds during their nesting season.*

- A landscaped forest territory with a network of paths, the length of which totals several kilometres, for walking, running, Nordic walking or a picnic. There are wooden footbridges in addition to the paths and sculptures of elks made of wood and metal at the entrance. The forest can be accessed from Rubeņi road, where the main entrance to the forest territory is located.

- One of the longest footbridges in Latvia, connects the centre of the city and the Post Island. This is an excellent place for leisure or active recreation: playgrounds for children, outdoor training equipment, a beach, volleyball courts, a stage, an ice rink. The largest festivals of the city take place on the island, a park of grog sculptures.

15

LIELUPE FLOODLAND MEADOWS, WILD HORSES AND OBSERVATION TOWER*

16

LANGERVALDE FOREST

17

POST ISLAND AND MĪTAVA BRIDGE

- Jelgava is a student city therefore sculptor Kārlis Īle has created an image of a student roaming Jelgava, who he has named Jēkabs Ceriņš. The handle of the umbrella has special powers – one must think of a wish and touch the handle then the wish will come true!

18

SCULPTURE-FOUNTAIN JELGAVA'S STUDENT

- The promenade for pedestrians on J.Čakstes Boulevard has two levels – one level is parallel to the street, the other – follows the bank of the Driksa River with 3 metres high illuminated waterfalls. The promenade on the right bank of the Lielupe offers a great view upon the city, it also has a swimming area, playgrounds for children and stand up paddle board (SUP) rental. At the end of the promenade – the sculpture Sirdspuņš crafted of metal by the sculptor Kārlis Īle.

19

JELGAVA PROMENADES

- The Environmental Object Time Wheel 100 created by the sculptor Kārlis Īle is a dedication to the centenary of the Latvian State, unveiled on 4 May 2018. It is adjacent to Vecpilsēta (Old Town) Street Quarter – the oldest buildings in Jelgava that have survived World War II.

Lielā iela 38

20

THE ENVIRONMENTAL OBJECT TIME WHEEL 100

- In 1818 the residence of the Counts von Medem was built here – Villa Medem. The house was surrounded by a garden, which later became Uzvara Park. There is a memorial stone Dziesmu vainags (The Crown of Songs) (author Ģirts Burvis) in the park that commemorates IV All-Latvian Song and Music Festival.

21

UZVARAS PARK



18



JELGAVA CITY

great adventures



22 BOAT TOURS ON THE LIELUPE AND DRIKSA RIVERS

- The boat leaves from a pier on J.Čakstes Boulevard promenade near Mītava Bridge (number of places 7 – 40 persons).

i Additional information at Jelgava Tourism Centre. Akadēmijas iela 1, +371 63005447, www.visit.jelgava.lv

RENTAL OF PEDAL BOATS, BOATS AND SUP BOARDS

- 23** Jelgava Yacht Club
Pilssalas iela 6, +371 20205215, 29242520, www.jjk.lv
- 24** Paddle Boat and Boat Rental on the Pasta Island.
Pasta sala 3, +371 25432323
- 25** Paddle Boat Rental Pelikāns
Pasta sala 1, +371 26434520
- 26** Stand up Paddle Board (SUP) Rental – paddling on a stand up paddle board on the Lielupe and the Driksa River.
Beach on the Lielupe River Promenade, +371 25757555, www.sup.lv

BEACHES IN JELGAVA

There are two swimming areas on the Lielupe:

- 27** On the right bank of the Lielupe by the pedestrian promenade;
- 28** On the left bank of the Lielupe, on the Post Island.



25

29 ZEMGALE OLYMPIC CENTRE

- A multifunctional sports hall, a football and athletics stadium, volleyball courts, a BMX track.

Kronvalda iela 24, +371 20365713, 63020792, www.zoc.lv

31 TENISS CLUB JELGAVA

- Four closed tennis courts available all year round.

Lietuvas šoseja 68a, +371 26261919, www.tkj.lv

33 BATH RITUALS PĀRLIELUPES PIRTNIEKI

- Bath Rituals

Cukura iela 13, +371 26370100, www.parlielupespirtnieki.lv

CHILDREN AMUSEMENT CENTRES:

- 35** Bossiks, Pulkveža Brieža iela 4, +371 63022438, www.bossiks.lv

- 36** Bambino, Peldu iela 4, +371 29948109, www.bambinoatrakcijas.lv

- 37** Martas zeme, Dobeles šoseja 7, +371 26001201

- 38** Bumbu virpulis, Dobeles iela 48 (2nd floor), +371 29102766

30 RECREATION AND SPORTS CENTRE ZEMGALE

- Bowling, tennis courts, +371 63007700
- An indoor ice arena, +371 63007220

Rīgas iela 11, www.skzemgale.lv

32 SPORTS AND RECREATION COMPLEX RULLĪTIS

- A go-kart racing track, paintball.

Aku ceļš 1, +371 28285633, www.rullitis.lv

34 CHILDREN AND YOUTH CAMP LEDIŅI

- A place for activities and recreation surrounded by a pine forest – outdoor training equipment, forest agility tracks, a slide, a swing set, a beach volleyball court, a picnic place.

Lediņu ceļš 1, Lediņi, +371 26448086, www.junda.lv

39 ICE ARENA ON THE PASTA ISLAND

- The public ice arena of Jelgava city with a roof; in summer the arena is adapted for roller skating and other sports.

Pasta Island, +371 20367677



29



JELGAVA COUNTY

Did you know?

- Jelgava county joins together two worlds – the historical aristocratism with the echoes of the way of life of noble families of von Hahn, von Kettler or von Medem, which have become the stuff of legends, and the evidence of the traditional values of Zemgale as Latvia's bread-basket, still upheld by the contemporary farmers as the legacy of their ancestors. These two worlds exist side by side quite naturally in Jelgava county. Almost every parish has a manor with a rich history, surrounded by an old park, which is able to capture the imagination of any traveller.
- Jelgava county has much to offer in terms of exploration of history as well as in terms of adventures for anyone's taste buds during visits to home producers and open farms – an ostrich farm in Glūda, a winery in Zaļenieki, a cheese maker in Sesava, peppermint syrups and treats producer in Vilce, pastry and confectionery producer in Svēte, an apiary in Vircava, a crunchy snack manufacturer from broad beans in Jaunsvirlauka and many more.
- Just select a route according to your wishes and you will discover a beautiful world – one that can be explored with family, friends or colleagues! You are welcome to visit and learn more about Jelgava county and all it has to offer!

Facts

- Population: 23 496
- Territory: 1317 km²
- By the territory it is the largest county in Zemgale region
- Jelgava county includes 13 parishes – Eleja, Glūda, Jaunsvirlauka, Kalnciems, Lielplatone, Līvberze, Platone, Sesava, Svēte, Valgunde, Vilce, Vircava and Zaļenieki parishes.



WITNESSES OF HISTORY

40 CHRISTMAS BATTLE MUSEUM MANGAĻI

- An exhibition about the legendary Christmas Battles of World War I;
- A part of the German defence line – the German Rampart, from the times of the war has been reconstructed in the territory of the museum in its authentic location; it is unique for the Baltic region;
- An exploratory trail of 7.2 km has been created following the route of the attack of the 1st Latvian Riflemen Brigade on January 5, 1917.

Valgunde parish, Mangaļi, +371 28349259,
67228147, www.karamuzejs.lv
(GPS 56.8232005; 23.7034132)

42 ELEJA MANOR PARK AND TEA HOUSE

- The palace at Eleja Manor was an outstanding example of the Classicism style architecture in Europe; ordered by the Duke Christoph Johann Friedrich von Medem and built from 1806 to 1810, destroyed during World War I;
- The romantic Tea House and the stone fence with arcades has been reconstructed in our days;
- Rare tree species have been preserved in the park, it has 15 noble trees; the open-air stage there hosts the biggest festivals and events in Jelgava county, restored historical paths, a bridge and two interactive objects made by the sculptor Gļebs Panteļejevs - the sculpture Mīlestība (Love) and the environmental object Saruna (Conversation).

Eleja parish, +371 26128853
(GPS 56.4253852; 23.6998833)

41 LOŽMETĒJKALNS (MACHINE - GUN HILL) IN TĪREĻPURVS

- A symbol and a memorial to heroism of Latvian Riflemen, a unique witness to the battles fought during World War I;
- A 27 metres high wooden watchtower has been built, offering visitors beautiful panoramic views at forests surrounding Tīreļpurvs.

Valgunde parish
(GPS 56.8664999; 23.6606057)

43 ZAĻENIEKI (THE GREEN) MANOR AND PARK

- The hunting residence of the Duke of Courland and Semigallia, an example of the 18th century architecture, a considerable amount of original architectural elements have been preserved in the building;
- Currently Zaļenieki Manor is home to Zaļenieki Commercial and Crafts School;
- The park is populated by exotic tree species, a nature trail has been created.

Zaļenieki parish,
+371 63074250, 22043531
(GPS 56.5308990; 23.5082256)





44 VILCE MANOR AND PARK

- The manor was built in the 1750s, owned by von Medem and Keyserlingk families;
- Presently the manor house houses Vilce Primary School, parish administration, tourist information point, an exhibition about the history of the manor and the parish, a disc golf course has been created in the park;
- The manor and its vicinity are a part of the Nature Park Vilce.

Vilce parish, +371 26351169, 28346682 (GPS 56.4206676; 23.5423063)

45 LIELPLATONE MANOR AND PARK

- The manor, about which many legends are told, was established in the 19th century and was owned by Barons von Hahn;
- The manor complex includes several auxiliary buildings and a big park, riding on horses and ponies is offered;
- Presently the manor house houses Lielplatone parish administration, a library, a kindergarten and the tourist information point;
- In 2018 the laundry building of the manor was restored as an authentic laundry building of the 18th/19th century with an exploratory programme of the laundry traditions.

Lielplatone parish, +371 26611468 (GPS 56.4521918; 23.6594295)



46 LIELVIRCAVA MANOR

- The manor house was built from 1803 to 1808 at the location of the old castle, the manor was built by Baron von Kloppmann, later von Hahn family became its owners;
- From 1924 to 1980 a school was located in the manor house;
- Currently visitors can view the manor house or take a tour with a guide dressed in an ancient costume, listen to the tales about the history of fashion and view an exhibition of the 19th century costumes' collection.

Platone parish, Lielvircava, +371 22024127, 28758947 (GPS 56.5214679; 23.7570932)

47 VIRCAVA MANOR AND PARK

- The manor complex was built in the 18th century based on a design by S.Jensen, it was a favoured country residence of the Duke of Courland Peter von Biron;
- In 1919 the Bermontians burned the manor down during their withdrawal from Jelgava;
- The Chevaliers' House, where Vircava Secondary School is located, has been preserved best to our days, the former granary is now home to the People's House, the Baroque style park has been partially preserved.

Vircava parish, +371 26261569, 63085984 (GPS 56.5591648; 23.7749299)



48 STAĻĢENE MANOR

- The manor complex was built at the end of the 18th century; with a Classicism style manor house designed by the architect S.Jensen;
- Since the 1930s the manor house has been adapted as a school building;
- Jaunsvirlauka Parish Local History Museum is located in the cellar of the manor house, the former Servants House houses Jaunsvirlauka Parish Culture Centre Līdumi.

Jaunsvirlauka parish, Staļģene, +371 26383129, 29199324 (GPS 56.5718193; 23.9614250)

49 BERĶENE MANOR

- Berķene Manor is one of the oldest small manors in Zemgale and is located in a picturesque place – on the bank of the Svēte River, between Tērvete and Eleja;
- Here one can explore the life in the manor in the late 19th century and hear stories about the revival of the manor;
- Harmonious recreation awaits the guests of Berķene Manor: accommodation in the manor house and relaxation in the SPA complex.

*Vilce parish, Ziedkalne, +371 29252565, 29228580, www.berkenesmuiza.lv
(GPS 56.4289028; 23.4800706)*

50 ABGUNSTE MANOR

- The manor was built around 1780, at the beginning of the 20th century it housed the parish school, later apartments, a shop;
- Open working spaces have been created in the manor house for ceramists, textile artists and woodworkers, the biggest ceramics kiln in Latvia is operated here;
- It offers an inspiring environment for the creative processes of art and culture and organisation of events.

*Zaļenieki parish, Abgunste, +371 29393131, 28373711, www.abgunste.lv
(GPS 56.4781923; 23.4885369)*

51 BLANKENFELDE MANOR AND PARK

- The manor's buildings acquired their present exterior in the 19th century, the manor is rich in small architectural details rare in Latvia – the entrance gate, small pavilions;
- At the beginning of the 19th century the future King of France Louis XVIII stayed at the manor twice;
- The Bell Museum is located in the manor's stable. There is also the revived park, the pride of the manor – elders, from which diverse products are manufactured and offered for tasting.

*Vilce parish, Blankenfelde, +371 27810348, www.blankenfeldesmuiza.lv
(GPS 56.3446532; 23.5463140)*



SACRED HERITAGE

52 THE BRANCH OF THE RIGA HOLY TRINITY SERGIY WOMEN'S MONASTERY

- The construction of the monastery began in 1894. Presently approximately 50 nuns live in the monastery.

Valgunde parish, +371 63085215, +371 63085244 (GPS 56.7336959; 23.6932123)

53 LIELVIRCAVA LUTHERAN CHURCH

- The oldest stone church building in Jelgava county, built in 1595 on the funds of the owners of Lielvircava Manor Barons von Klopmann.

Platone parish, Lielvircava, +371 26547117, 29723404 (GPS 56.5100481; 23.7556837)

54 ZAĻENIEKI LUTHERAN CHURCH

- The current building of the church was erected in 1872. The church has an organ built in 1862, the bell in the church tower is the largest in Jelgava county.

Zaļenieki parish, +371 26747240, 26836758 (GPS 56.5298682; 23.4963801)

55 LĪVBĒRZE CATHOLIC CHURCH

- The only wooden church in Jelgava county, built in 1684. The interior of the church contains artistic heritage of national value from the 17th and 18th centuries.

Līvberze parish, +371 29413174 (GPS 56.7038921; 23.4545922)

56 STAĻĢENE ST. VIRGIN MARY CHURCH (THE AMBER CHAPEL)

- The church was built in 1998 on donations from Germany and is open to the faithful of any Christian denomination.

Jaunsvirlauka parish, Šauvas, +371 29199324 (GPS 56.5449864; 23.9237160)





JELGAVA COUNTY

flavours and sensations

62

57 MĀLKALNU FAMILY FARM BLŪDŽI

- Tastings of unripened cheese, bread, vegetable salads and preserves made at the farm.

Sesava parish, Bērvircava,
+371 27114820, 29931416
(GPS 56.3966397; 23.7346401)

59 BEEKEEPING FARM LĪGAS MEDUS

- A visit to the apiary with a bee-keeper to learn about the life of bees and the process of honey production, as well as a tasting of the farm's products.

Vircaiva parish, Mucenieki,
+371 29110940, 26189710,
www.ligasmedus.lv
(GPS 56.5959411; 23.7989473)

61 WINERY ĀBELĪTES

- Winery Ābelītes that produces wine from berries and fruits grown in Latvia offers a tour of the winery and wine tastings

Zaļenieki parish, +371 26517058,
www.abelites.lv (GPS 56.4724521; 23.5006055)

58 PEPPERMINT PRODUCT DEGUSTATION PIPARMĒTRU NAMIŅŠ

- Enjoying peppermint tea made of various cultivars of the plant along with other products made from peppermint, creative workshops are also offered.

Vilce parish, Terēni, +371 26394062,
26199825, www.piparmetras.lv
(GPS 56.4248301; 23.5073094)

60 SHIITAKE MUSHROOM FARM TRUBENIEKI

- The farm is one of the largest shiitake mushroom growers in Latvia and offers an opportunity to take a tour around the farm, explore the secrets of growing the mushroom, taste fresh shiitake and a soup made of shiitake mushrooms.

Lielplatone parish, +371 26135555
(GPS 56.4664074; 23.6120894)

62 SEA BUCKTHORN GARDEN ZELT

- Sea buckthorn garden, where visitors may know more about sea buckthorn growing, fruit production, health promotion and other topics in thematic excursions, gastronomic master classes, lectures and seminars.

Platone parish, +371 26499893, www.zelt.bio
(GPS 56.6074954; 23.7228550)

63 PRODUCTION OF ROASTED BEANS PUPUCHI

- The factory produces a crunchy and healthy snack from broad beans – Pupuchi. Visitors may learn about the value of the product and the production process, participate in some practical activities and taste the product.

Jaunsvirlauka parish, Dzirnieki, Ievu iela 12,
+371 29274008, www.pupuchi.lv
(GPS 56.5649340; 23.8752463)

65 OSTRICH FARM MAZZARIŅI

- The ostrich farm has over 50 ostriches from Australia, Africa and South America. Alpacas and rabbits are also kept at the farm and visitors can see them too.

Glūda parish, Nākotne, +371 29134788,
www.ratites.lv
(GPS 56.6369874; 23.4656221)

67 ARBORETUM VILKI

- The arboretum is populated by over 1000 various plants – some characteristic of the Latvian countryside, some – exotic. You can also take a look at the Latvian blue cows and taste their milk or treats made out of it.

Zaļenieki parish,
+371 26153697, 28378543
(GPS 56.5320864; 23.5525359)

64 DISTILLERY TĪREĻU DŽĪTUVE

- A producer of spirit drinks offering tastings of vodka made of fruits and berries grown in Latvia.

Valgunde parish, Tīreļi, Šinšilas,
+371 26544243
(GPS 56.834515; 23.5959223)

66 WOODWORKING WORKSHOP AMATNIEKI

- The woodworking process from a spoon to a house, an opportunity to watch and participate in the crate weaving process.

Sesava parish, +371 26892959,
www.kocinieks.lv
(GPS 56.4187202; 23.7764773)

68 FROG SOUVENIR – FIGURINE COLLECTION VARŽU MĀJA

- Private collection of souvenirs, which displays more than 2000 figurines of frogs from different parts of the world.

Eleja parish, Indrāni,
+371 28609853, (GPS 56.4803012;
23.7141506)



65



JELGAVA COUNTY

○
active recreation



73
**RECREATION
COMPLEX
GRANTIŅI**

- A sturgeon hatchery, and a possibility to catch some fish;
- A vast complex for active recreation – a football field, volleyball courts, a possibility to play badminton, take a ride on a rowboat or a pedal boat, rent a SUP board;
- Picnic areas with tables and fireplaces, as well as a children's playground are available;
- Visitors can stay overnight in cabins or at the hotel, and enjoy a meal in the café.

*Svēte parish, Grantiņi 1,
+371 28602267, www.granticamp.lv
(GPS 56.5519957; 23.6516817)*

74
**PLACE FOR ACTIVE
LEISURE AND
SPORTS LĪGOTNES**

- The right place for organizing outdoor events, a picnic, for recreation, entertainment and outdoor sports activities;
- There is a playground for children, a stage, streetball and beach volleyball courts in the territory.

*Svēte parish, +371 28660603
(GPS 56.5871806; 23.6597691)*

75
**RECREATION AND
ENTERTAINMENT
COMPLEX
VIESU LĪČI**

- An open-air playground for children: swings, carousels, mini-golf, mini train, a pedal-copter, a slide, a Ferris wheel for children, agility hurdles, etc.
- Tasty meals in the nearby restaurant Zemnieka cienasts and a hotel is also available for accommodation.

*Jaunsvirlauka parish, Līči, +371 63058443, 29204514,
www.lici.lv (GPS 56.6400500; 23.7777893)*

69 **NATURE PARK VILCE**

- A nature park with a hilly terrain uncharacteristic of Zemgale, with the exploratory Barona trail, which includes the Spring of Lielmāte, a Semigallian hillfort with a sightseeing platform, the steep banks of the rivers Rukūze and Vilce with sandstone cliff exposures;
- A rest area is maintained in the Zaķi Meadow;
- Exploratory guided excursions in the park must be booked prior to the visit.

Vilce parish, +371 26351169 (GPS 56.4205219; 23.5418293)

HORSE RIDING

70 **Ķirpju stalli,**
*Līvberzes parish, Baltās mājas,
+371 22848459
(GPS 56.6524026; 23.6111125)*

71 **Mītavas zirgi,**
*Vircavas parish, Daunāti,
+371 28611961
(GPS 56.5945109; 23.7550350)*

72 **Tīreļu stalli,**
*Valgundes parish, Tīreļi, Šinšilas,
+371 26544243
(GPS 56.834515; 23.5959223)*





76

OZOLNIEKI COUNTY



78

OZOLNIEKI COUNTY

witnesses of history

Did you know?

- The earliest written reference to the territory of the present-day Ozolnieki county has been found in relation to events of 1287 during the Livonian Crusade. In the 16th century the territory of the present-day Ozolnieki county became a part of the Duchy of Courland and Semigallia. In 1919 from 15 to 21 November during the Latvian War of Independence the main battles of liberation of Jelgava from Bermontians took place in the territory of Ozolnieki county.
- At the end of the 19th century and the beginning of the 20th century in the territory of the present Ozolnieki county clay mining expanded, brick factories rose, from where building materials were transported on barges to Rīga and Jelgava. In 1960s the history and development of Ozolnieki is related to the development of a village of meliorators.
- Presently Ozolnieki county is an economically active living space focused on sustainable development, which is ensured by motivated people, good internal and external accessibility, a beneficial environment for entrepreneurship and modern and well maintained infrastructure. Because of the activity of people and the underground riches of the region work and its fruit are held in high esteem here from olden times. This is evidenced by Straumēni written by Edvarts Virza, works of Jānis Čakste, as well as the passion and achievements of our fellow countrymen in our days.

Facts

- The county consists of 3 parishes – Ozolnieki, Cena and Salgale parishes and 13 villages.
- Population – 10 618
- Territory – 286 km²

www.ozolnieki.lv



76 THE HOUSE OF THE FIRST PRESIDENT OF LATVIA JĀNIS ČAKSTE

- Auču house was built in 1930s; since 1995 the property once again belongs to Čakste family;
- A new exhibition was opened in 2018 in the renovated servants house, which tells about the fate of the first president of the Republic of Latvia Jānis Čakste and his family using modern, contemporary media.

Salgales parish, Auči, +371 26392154 (GPS 56.5946764; 23.9575775)

77 THE HOUSE OF LITERATES EDVARTS VIRZA AND ELZA STĒRSTE BILLĪTES

- Latvian literary figures Edvarts Virza and Elza Stērste lived in Billītes for many years;
- The house is maintained by heirs to the family, an exhibition about the lives of the authors and their creative activities is available.

Salgale parish, +371 29299790 (GPS 56.5750280; 24.1092300)

78 TETELE (TETELMINDE) TOWER AND PARK

- The tower was built in the second half of the 19th century as a watchtower for hunters in the park of Tetelminde Manor, on the bank of the Lielupe.

Cena parish, Tetele (GPS 56.6370692; 23.8392445)



81

79 VAREĻI MONUMENT

- The monument is dedicated to 14 cadets of the Latvian Military School killed in the fights against Bermont's army in November 1919;
- Designed by the artist J.Borkovskis, first unveiled in 1935; blown up in 1951, restored in 1990.

Salgale parish (GPS 56.6240561; 23.9091423)

80 MONUMENT TO THE FALLEN SOLDIERS OF RIGA 6TH INFANTRY REGIMEN

- Dedicated to 16 fallen soldiers of Riga 6th Infantry Regiment in the battle against the Bermontians
- Atklāts 1937. gadā, atjaunots 2009. gadā.

Cena parish, Skuju skola (GPS 56.7261722; 23.8501107)

81 MEMORIAL SITE THE LIGHT OF FREEDOM

- In 2018 SIA UPPE created an environmental object – a memorial site to those, who stood watch on the barricades in 1991.

Cena parish, Brankas (GPS 56.6852286; 23.8345774)



77



82

82 MINI ZOO LAUKU SĒTA

- The territory of Zoo Lauku sēta is the right place to enjoy peaceful walks, watch animals living and grazing in the meadows – ponies, donkeys, a lama, dwarf goats, dwarf sheep, dwarf pigs and various birds.

Cena parish, Brankas, Jaunaudzes,
+371 27171712, www.zoolaukuseta.lv
(GPS 56.6893676; 23.8364277)

83 GOAT FARM LĪCĪŠI

- One of the biggest goat farms and manufacturers of goat milk-based products in Latvia, tastings of goat milk products.

Cena parish, +371 26537993, www.licisi.lv
(GPS 56.7120470; 23.8179420)

84 GARLIC PRODUCTION TASTING ĶIPLOKU PASAULE

- Tastings of healthy and creative products made of garlic grown at the farm.

Olaines country, Uzvaras Līdums, Annas,
+371 29206015, www.kiplokupasaule.lv
(GPS 56.7692886; 23.8692540)

85 FARM HOUSE CAUNĪTES

- Visitors are welcome to experience the traditional Latvian way of life, bake a tasty loaf of bread in a wood oven and take part in seasonal activities as observed by the ancient Latvians.

Cena parish, +371 26352395,
www.caunites.lv
(GPS 56.7225176; 23.7910614)

86 TREE NURSERY BĒTRAS

- Tastings of candied quinces and cranberries, syrups made from these fruits and berries, a tour of the farm.

Salgale parish, +371 28662847, 29494883, www.betras.lv
(GPS 56.6377002; 23.9501895)



OZOLNIEKI COUNTY ACTIVE RECREATION

87 BOAT RENTAL AND TOURS OZOLAIVAS.LV

- Rental of canoe boats, boating routes, organised boat trips and expeditions on rivers in Zemgale.

Kļavu iela 6, +371 23202900, 26400888,
www.ozolaivas.lv
(GPS 56.6931602; 23.7530069)

88 OZOLNIEKI SPORTS SCHOOL

- A sports school, sports hall, a gym with exercise equipment, a football field, 3 streetball courts, a skateboard park, inventory rental, sauna.

Stadiona iela 5, +371 63050516, 63050526
(GPS 56.6909228; 23.7892283)

89 OZOLNIEKI FOREST PARK

- A public walking path and a ski track with artificial lighting in winter; an artificial hill for the lovers of active winter recreation.

Skolas iela 20
(GPS 56.6925971; 23.7854396)

90 ICE ARENA OZO HALLE

- Public skating, rental of the ice rink, rental of ice skates, figure skating training, sauna.

Stadiona iela 5b, +371 63050615,
26604863, www.ozohalle.lv
(GPS 56.6909228; 23.7892283)

91 WAKE PARK 5 MASTI

- The only circular cable wakeboarding and waterskiing track in the Baltic states, an inflatable aqua park.

Ozolnieki Lake, +371 28366699
(GPS 56.6884015; 23.7965089)

92 FISHING SUDRABLĪCIS

- Recreation by water, commercial fishing, surfing, a place for tents and boat rental.

Cena parish, Liegas, +371 29183711
(GPS 56.6458260; 23.8324476)

93 OZOLNIEKI LAKE

- Playgrounds for children, a beach, a path for walking and riding bicycles that circles the lake.

Ozolnieki (GPS 56.6893541; 23.7967288)



HORSE RIDING

- 94** Princis
Cena parish, Brankas, +371 26563936, 20206039 (GPS 56.6743678; 23.8475298)

- 95** Mazmušķu zirgi
Cena parish, Mazmušķi, +371 29140535, 29552446
(GPS 56.7064444; 23.7928824)

TOURISM SERVICES



ACCOMMODATION

(the number of beds is shown in brackets)

JELGAVA

- Hotel Jelgava (80)**
Lielā iela 6, +371 63026193,
63023349, www.hoteljelgava.lv
- Hotel Zemgale (78)**
Skautu iela 2, +371 63007707,
www.skzemgale.lv
- Motel Akva (30)**
Birzes iela 49, +371 63023444,
29990477
- LLU Youth Hostel No. 8 (132)**
Lielā iela 19, +371 25419650

JELGAVA COUNTY

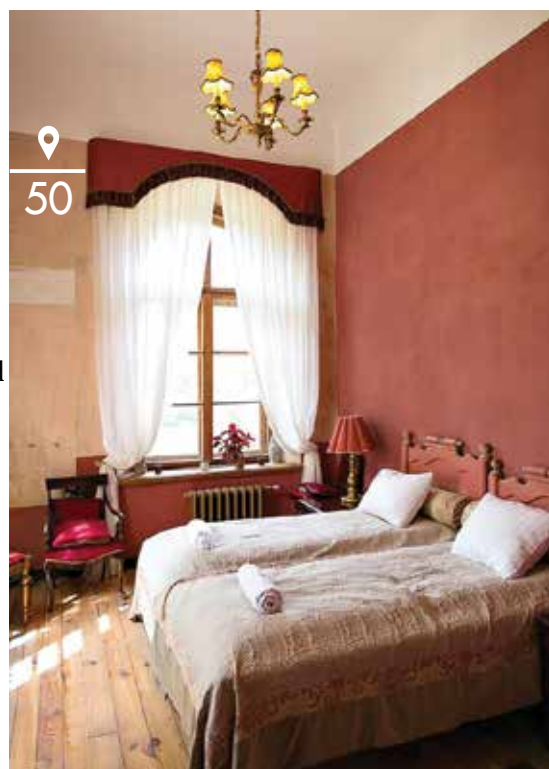
- Hotel Senliči (34)**
Jaunsvirlaukas parish,
+371 20007065, www.senlici.lv
- Recreation Complex Grantiņi (37)**
Svētes parish, Grantiņi 1,
+371 2860226, www.grantinicamp.lv
- Berķenes Manor (10)**
Vilces parish, Ziedkalne,
+371 29252565, 29228580,
www.berkenesmuiza.lv
- Abgunste Manor (65)**
Zaļeniķu parish, +371 29393131,
28373711, www.abgunste.lv
- Blankenfelde Manor (8)**
Vilces parish, +371 27810348,
www.blankenfeldesmuiza.lv



- Guest House Pūtelkrogs (29)**
Zaļenieku parish, +371 63011900,
29255010, www.puteli.lv
- Guest House Aitiņlauvas (19)**
Valgunde parish, Rīga – Liepāja 22.km,
+371 29160393, www.aitinlauvas.lv
- Guest House Guntmārītes (16)**
Valgunde parish, +371 26164173,
29444859, www.guntmarites.lv
- Guest House Upeslīči atpūtai (24)**
Līvberze parish, +371 28117861,
www.upesliciatputai.lv
- Guest House Zaļie atvari (60)**
Līvberze parish, Atvari,
+371 29488465, www.zalieatvari.lv
- Guest House Kaupēna dzirnavas (38)**
Zaļenieku parish, +371 29263768,
26551259
- Guest House Brangūļi (15)**
Valgunde parish, Valgunde,
+371 28772324, 25918171
- Guest House Naktsmājiņa (9)**
Jaunsvirlauka parish, +371 20455402,
29204514, www.lici.lv
- Guest House Upmaļi (20)**
Vilce parish, +371 29237149,
www.upmali.lv
- Guest House Galzemji (80),**
Jaunsvirlauka parish, +371 29188408,
www.galzemji.mozello.lv
- Dormitory of Zaļenieku Commercial and
Crafts School (150)**
Zaļenieku parish, +371 63074250,
29433918, www.zav.lv
- Hostel Jaunlīdumi (42)**
Jaunsvirlauka parish, Dzirnīeki,
+371 29199324, www.lidumi.lv



- Hotel Agate Hotel (50)**
Ozolnieki, Skolas iela 16,
+371 28684473, 63013527,
www.agatehotel.lv
- Hotel of Ozolnieki Sports School Hotel
(30)**
Ozolnieki, Stadiona iela 5,
+371 63050516, 63050526,
www.ozolnieki.lv
- Dormitory of Latvijas Lauku
konsultāciju un izglītības centrs (50)**
Ozolnieki, Rīgas iela 34,
+371 22018583, 63050220, www.llkc.lv
- Holiday House Ānes muiža (10)**
Cena parish, Āne, +371 26483712,
www.anesmuiža.lv
- .Ānes Youth Initiative Centre
Hostel (21)**
Cena parish, Āne, Celtnieku iela 12,
+371 25996199
- Camp Place Cīzeri (tent places)**
Salgale parish, +371 26573272



- Restaurant Tornis**
Akadēmijas iela 1, +371 66912299,
25550054
- Restaurant and Bistro Bar Parks**
Kr. Barona iela 3, +371 63024188,
27833219, www.restoransparks.lv
- Café-cocktail bar Chocolate & Pepper**
Kr. Barona iela 6, +371 63010220,
www.choco-pepper.lv
- Restaurant Pilsētas elpa**
Pasta sala 1, +371 26633703,
29320268
- Bar – restaurant Putnu dārzs**
Lielā iela 6, +371 63023349, 26935274,
www.hoteljelgava.lv
- Tea House Silva**
Pilssalas iela 2a, +371 22119119,
29266586
- Pastry Studio Tarte**
Mātera iela 26, +371 20136090
- Coffee and Breakfast Bar Academia**
Akadēmijas iela 4a, +371 20553880,
28951491
- Bistro Silva**
Driksas iela 7/9, +371 63084899,
29266586, www.bistrosilva.lv
- Lunch Restaurant Otto**
Lielā iela 17, +371 26661151
- Tavern Istaba**
J. Čakstes bulvāris 7, +371 63025909,
29507108
- Café Pie mednieka**
Vecpilsētas iela 19, +371 63028528
- Bar Melno cepurīšu balerija**
Raiņa iela 28, +371 27787776,
www.mcbalerija.com
- Tavern Kreklu krogs**
Lielā iela 19a, +371 26633433,
www.kreklukrogs.mozello.lv
- Tavern Ceplis**
Lielā iela 49, +371 63024726
- Jelgava Palace Café Niko**
Lielā iela 2, +371 26891862
- Asian restaurant Dragon**
Akadēmijas iela 21, +371 25851505
- Pizzeria Picu darbnīca**
Rīgas iela 1, +371 20003993,
www.picudarbnica.lv
- Pizzeria Čili Pica**
Katoļu iela 7 un Rīgas iela 11,
+371 63045555, www.cili.lv
- Pizzeria LuLu Pica**
Raiņa iela 20, +371 80005858, www.lulu.lv
- Café-bistro Salmu krogs**
Katoļu iela 18, 2. stāvs, +371 63011691
- Café Tavs mirklis**
Pasta iela 45, +371 22775533, 22772211,
www.tavsmirkklis.mozello.lv
- Express Restaurant Ņamma**
Rūpniecības 77a, t/c Elvi, +371 25459777,
29151939, www.namma.lv
- Fast Food Restaurant McDonald's**
Brīvības bulvāris 1, +371 63020166,
26468158, www.mcdonalds.lv
- Fast Food Restaurant Hesburger**
Katoļu iela 10b, +371 25911221;
Loka maģistrāle 2a, +371 26480302,
www.hesburger.lv

JELGAVA COUNTY



- Restaurant Pūtelkrogs**
Zaļenieki parish, Pūteļu krejotava,
+371 63011900, 29255010,
www.puteli.lv
- Restaurant Grantiņi**
Svēte parish, Grantiņi 1,
+371 28602267,
www.grantinicamp.lv
- Restorant-bistro Aitiņlauvas**
Valgunde parish, Rīga – Liepāja 22.km,
+371 29160393, www.aitinlauvas.lv
- Café Zemnieka cienasts**
Jaunsvirlauka parish, Rīga – Šauļi
43.km, +371 63058443, 20455402,
www.lici.lv
- Café Pīramīda**
Eleja parish, Eleja, Bauskas iela 3,
+371 26866206

SOUVENIRS

- Eco Shop Daba**
Jelgava, Raiņa iela 17, +371 63084395,
www.dabadaba.lv
- Artisanry Shop Daiļrade**
Jelgava, Akadēmijas iela 4,
+371 63082728
- Eco Shop Zaļā zeme**
Jelgava, Raiņa iela 35, +371 23771999,
www.zalazeme.eu
- Shop Luipop**
Jelgava, Pasta iela 18, +371 29458529
- Design Studio Sajūtu studija Aspazija,**
Jelgava, Raiņa iela 16,
+371 28310830
- Shopping Center Kanclera nams**
Jelgava, Katoļu iela 7 un Pasta iela
51/7, +371 63029610, www.kanclers.lv
- Jelgava Holy Trinity Church Tower**
Jelgava, Akadēmijas iela 1,
+371 63005445, www.visit.jelgava.lv
- Jelgava History and Art Museum of
Ģederts Eliass**
Jelgava, Akadēmijas iela 10,
+371 63023383, www.jymm.lv

OZOLNIEKI COUNTY



- Restorant Famille**
Ozolnieki, Skolas iela 16, +371 25661811,
www.agatehotel.lv
- Restaurant – Grill Bar
Masti Grill & Chill**
Ozolnieki, Rīgas iela 44, +371 23884400,
www.mastigrill.lv
- Restorant – bar Meka**
Ozolnieki, Stadiona iela 5a, +371 63050162,
29121214, www.meka.lv
- Lunch Restaurant Sakta**
Ozolnieki, Rīgas iela 34, +371 28890202
- Kebab Café Korner Kebab**
Ozolnieki, Meliorācijas iela 2-1,
+371 28122288
- Pizzeria Picburg pica**
Ozolnieki, Stadiona iela 5b, +371 22330030

TOURISM AGENCIES

- Ekskursija.lv – travel, bus rental,
booking of airline tickets, ferry tickets
and hotels, visas, insurance.**
Jelgava, Svētes iela 18,
+371 63010455, 29444037,
www.ekskursija.lv
- Noa Tour – atransport services, tours,
travel, theatre tickets.**
Jelgava, Raiņa iela 20-200. kab.,
+371 63011077, 22314063,
www.noatour.lv
- Star Tour – travel, bus rental, booking of
ferry, airline tickets, hotels, insurance,
visas.**
Jelgava, Rīgas iela 11a,
+371 63024240, 27066830,
www.startours.lv
- N-Travel – travel, tours, booking of
hotels, cruises, bus travel, insurance,
visas, charter flights.**
Jelgava, Raiņa iela 17,
+371 63021067, 26304115,
www.ntravel.lv



Jelgava Regional Tourism Centre
Akadēmijas iela 1, Jelgava, +371 63005447, www.visit.jelgava.lv

Lielplatone Tourist Information Point
Lielplatone Manor, Lielplatone parish, Jelgavas county, +371 26611468
(GPS 56.4521918; 23.6594295)

Vilce Tourist Information Point
Vilce Manor, Vilce parish, Jelgava county, +371 26351169, 63061081
(GPS 56.4206676; 23.5423063)

Lielvircava Tourist Information Point
Lielvircavas iela 4a, Lielvircava, Platone parish, Jelgava county, +371 22024127
(GPS 56.5214679; 23.7570932)

Eleja Tourist Information Point
Eleja Tea House, Eleja parish, Jelgava county, +371 26128853
(GPS 56.4253852; 23.6998833)

Zaļenieki Tourist Information Point
Zaļenieki Manor, Zaļenieki parish, Jelgava county, +371 22043531
(GPS 56.5308990; 23.5082256)

Staļģene Tourist Information Point
Staļģene, Skolas iela 2, Jelgava county, +371 26383129 (GPS 56.5718193; 23.9614250)

TOURISM INFORMATION

USEFUL INFORMATION

HOW TO GET TO JELGAVA?

BY TRAIN

Trains Rīga-Jelgava depart from Rīga Railway Station once an hour, the duration of the journey is 50 minutes.
More information www.pv.lv

BY BUS

Mini-buses Rīga-Jelgava depart from Rīga International Bus Station approximately every quarter hour, the duration of the journey is about 55 minutes.

Transport information: www.1188.lv

Public transport in Jelgava: the timetable and bus routes are available on Jelgavas autobusu parks (Jelgava Bus Fleet) website www.jap.lv

USEFUL PHONE NUMBERS

Transport information: (+371) 1188

Emergency Medical Assistance:
113; +371 63022469

Jelgava City Municipal Police:
+371 63028550

State Police: 110 vai 02

State Fire and Rescue Service:
112 vai 01

**Jelgava City Municipality
Operational Information Centre in
Jelgava:** (+371) 8787

TAXI

Jelgava Taxi Service, +371 63083200, 80008066

Taxi Service in Jelgava, +371 80008044

Jelgava



SIGHTSEEING

1. Jelgava Holy Trinity Church Tower
2. Jelgava History and Art Museum of Ģederts Eliass
3. Jelgava Palace
4. Vault of the Dukes of Courland
5. Memorial Museum of Ādolfs Alunāns
6. Jelgava Exhibition of Latvian Railway History Museum
7. Soviet Union Car Collection Anru Motors
8. Candy Workshop Karameļu darbnīca
9. St. Anna's Lutheran Church
10. Catholic Cathedral of the Immaculate Virgin Mary
11. St. Simeon's and St. Anna's Orthodox Cathedral
12. Monument to Jānis Čakste, the First President of Latvia
13. Monument to the Liberators of Jelgava Lāčplēsis
14. Memorial Sign in Honour of the Singer Nora Bumbiere
15. Lielupe Floodland Meadows
16. Langervalde Forest
17. Post Island and Mītava Bridge
18. Sculpture-fountain Jelgava's Student
19. Jelgava Promenades
20. The Environmental Object Time Wheel 100
21. Uzvaras Park



ACTIVE RECREATION

22. Boat Tours on the Lielupe and Driksa Rivers
23. Jelgava Yacht Club
24. Paddle Boat and Boat Rental on the Post Island
25. Paddle Boat Rental Pelikāns
26. Stand up Paddle Board (SUP) Rental
27. Beach on the Lielupe River Promenade
28. Beach on the Post Island
29. Zemgale Olympic Centre
30. Recreation and Sports Centre Zemgale
31. Tennis Club Jelgava
32. Sports and Recreation Complex Rullītis
33. Bath Rituals Pārlieupes pirtnieki
34. Children and Youth Camp Lediņi
35. Children Amusement Centre Bossiks
36. Children Amusement Centre Bambino

37. Children Amusement Centre Martas zeme
38. Children Amusement Centre Bumbu virpulis
39. Ice Arena on the Post Island



ACCOMMODATION

96. Hotel Jelgava
97. Hotel Zemgale
98. Motel Akva
99. LLU Youth Hostel No. 8



CAFES, RESTAURANTS

118. Restaurant Tornis
119. Restaurant and Bistro Bar Parks
120. Restaurant Chocolate & Pepper
121. Restaurant Pilsētas elpa
122. Bar-restaurant Putnu dārzs
123. Tea House Silva
124. Pastry Studio Tarte
125. Coffee and Breakfast Bar Academia
126. Bistro Silva
127. Lunch Restaurant Otto
128. Tavern Istaba
129. Café Pie mednieka
130. Bar Melno cepurīšu balerija
131. Tavern Kreklu grogs
132. Tavern Ceplis
133. Jelgava Palace Café Niko
134. Asian restaurant Dragon
135. Pizzeria Picu darbnīca
136. Pizzeria Čili Pica
137. Pizzeria Lulu Pica
138. Café Tavs mirklis
139. Express Restaurant Ņamma
140. Fast Food Restaurant McDonald's
141. Fast Food Restaurant Hesburger



SERVICES

147. Eco Shop Daba
148. Artisanry Shop Dailrade
149. Eco Shop Zaļā zeme
150. Shop Luipop
151. Festive Design Studio Sajūtu Studija - Aspazija
152. Shopping Center Kanclera nams
1. Jelgava Holy Trinity Church Tower
2. Jelgava History and Art Museum of Ģederts Eliass
153. Ekskursija.lv
154. Noa Tour
155. Star Tour
156. N-Travel





JELGAVA COUNTY

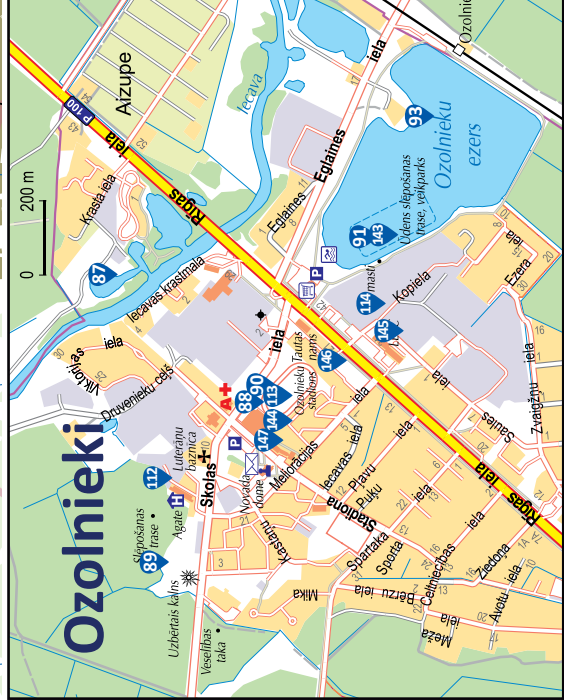
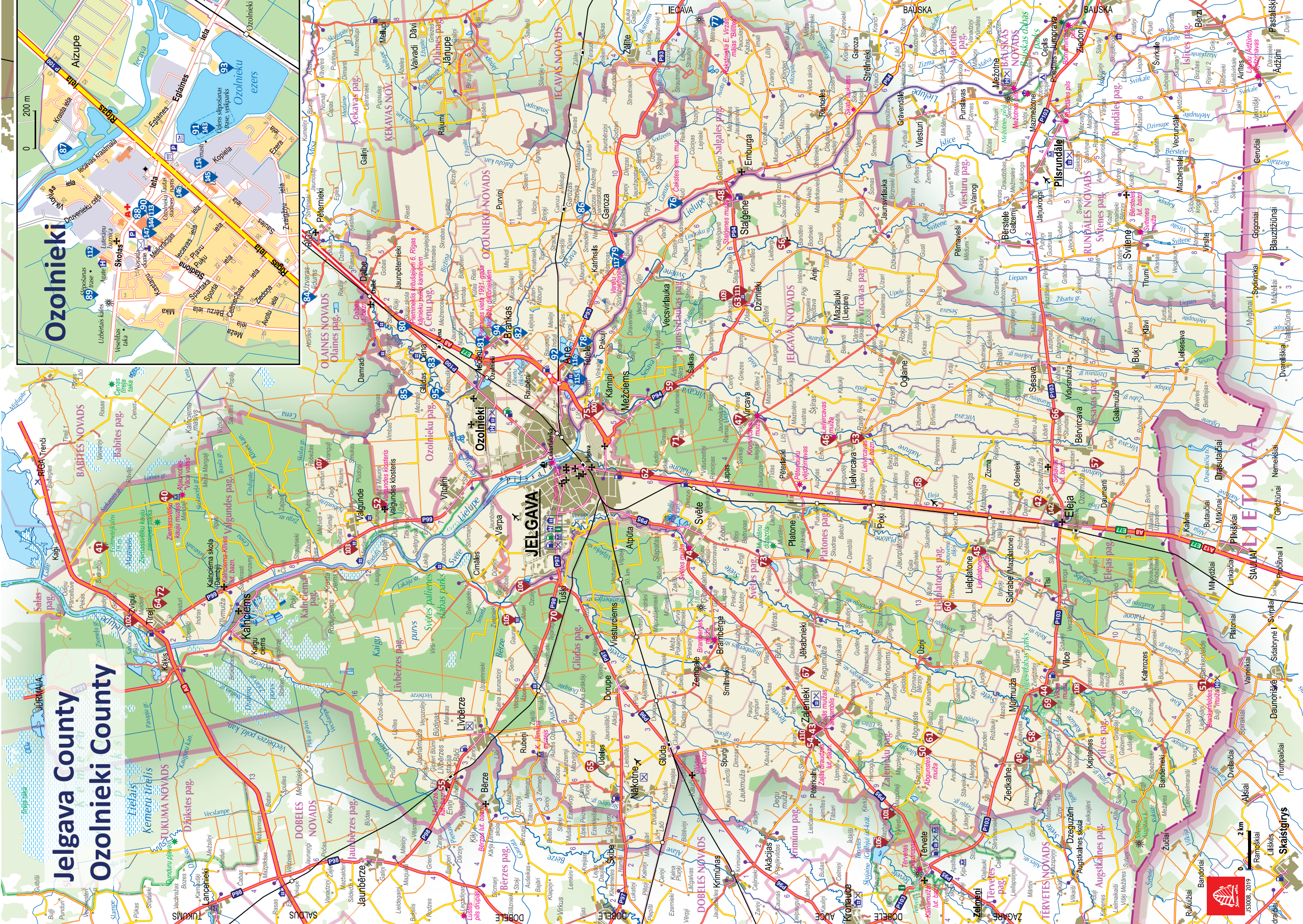
40. Christmas Battle Museum Mangalī
41. Ložmetējkalns (Machine-gun hill) in Tīrelpurvs
42. Eleja Manor Park and Tea House
43. Zaļenieki (The Green) Manor
44. Vilce Manor and Park
45. Lielplatone Manor and Park
46. Lielvircava Manor
47. Vircava Manor and Park
48. Staļģene Manor
49. Berķene Manor
50. Abgunste Manor
51. Blankenfelde Manor and Park
52. The Branch of the Riga Holy Trinity Sergiy Women's Monastery
53. Lielvircava Lutheran Church
54. Zaļenieki Lutheran Church
55. Līvberze Catholic Church
56. Staļģene St. Virgin Mary Church (the Amber Chapel)
57. Mālkalni Family Farm Blūdži
58. Peppermint Product Degustation Piparmētru namiņš
59. Beekeeping Farm Līgas Medus
60. Shitake Mushroom Farm Trubenieki
61. Winery Ābelītes
62. Sea buckthorn garden ZELT
63. Production of Roasted Beans Pupuchi
64. Distillery Tīreļu dzītuve
65. Ostrich farm Mazzariņi
66. Woodworking Workshop "Amatnieki
67. Arboretum Vilki
68. Frog souvenir – figurine collection Varžu māja
69. Nature Park Vilce
70. Horse Riding Ķirpju stalli
71. Horse Riding Mītavas zirgi
72. Horse Riding Tīreļu stalli
73. Recreation Complex Grantiņi
74. Place for Active Leisure and Sports Līgotnes
75. Recreation and Entertainment Complex Viesu Līči
100. Hotel Senliči
73. Recreation Complex Grantiņi
49. Berķene Manor
50. Abgunste Manor
51. Blankenfelde Manor
101. Guest House Pūtelkrogs
102. Guest House Aitiņlauvas
103. Guest House Guntmārites
104. Guest House Upesliči atpūtai
105. Guest House Zaļie atvari
106. Guest House Kaupēna Dzirnavas
107. Guest House Branguļi
75. Guest House Nakstmājiņa
108. Guest House Upmaļi
109. Guest House Galzemji
110. Dormitory of Zaļenieku Commercial and Crafts School
111. Hostel Jaunlīdumi
101. Restaurant Pūtelkrogs
73. Restaurant Grantiņi
102. Restaurant-bistro Aitiņlauvas
75. Café Zemnieka cienasts
142. Café Piramīda



OZOLNIEKI COUNTY

76. The House of Latvian President Jānis Čakste
77. The House of literates Edvarts Virza and Elza Stērste Billītes
78. Tetele Tower and Park
79. Vareļi Monument
80. Monument to the Fallen Soldiers of Riga 6th Infantry Regiment
81. Memorial Site The Light of Freedom
82. Mini Zoo Lauku sēta
83. Goat Farm Līcīši
84. Garlic Production Farm Ķiploku pasaule
85. Farm House Caunītes
86. Tree Nursery Bētras
87. Boat Rental and Tours Ozolaivas.lv
88. Ozolnieki Sports School
89. Ozolnieki Forest Park
90. Ice Arena Ozo Halle
91. Wake Park 5 masti
92. Fishing Sudrablīcis
93. Ozolnieki Lake
94. Horse Riding Princis
95. Horse Riding Mazmušķu zirgi
112. Hotel Agate Hotel
113. Hotel of Ozolnieki Sports School
114. Dormitory of Latvijas Lauku konsultāciju un izglītības centrs
115. Holiday House Ānes muiža
116. Āne Youth Initiative Centre Hostel
117. Camp Place Cizeri
112. Restaurant Famille
143. Restaurant & Grill Bar Masti Grill&Chill
144. Bar Meka
145. Lunch Restaurant Sakta
146. Kebab Café Korner Kebab
147. Pizzeria Picburg pica

Jelgava County Ozolnieki County





LARGEST EVENTS AND FESTIVALS IN JELGAVA CITY, JELGAVA COUNTY AND OZOLNIEKI COUNTY 2021

JANUARY

- Commemoration Events of the Christmas Battles in Jelgava County (09.01.2021.)

FEBRUARY

- 23rd International Ice Sculpture Festival in Jelgava (05.-07.02.2021.)
(CANCELED)

APRIL

- Easter Celebration in Jelgava and its vicinity (04.-05.04.2021.)

MAY

- Plant Days in Jelgava (08.-09.05.2021.)
- Jelgava County Festival (22.05.2021.)
- Jelgava City Festival (28.-30.05.2021.)

JUNE

- Ozolnieki County Festival (12.06.2021.)
- 15th International Sand Sculpture Festival in Jelgava (12.-13.06.2021.)

JULY

- The Historic Garden Days: Lielplatone, Eleja, Vilce, Staļģene and Zālenieki Manor parks in Jelgava County (03.-04.2021.)

AUGUST

- 21st All-Latvian Festival of Milk, Bread and Honey / 19th Milk Carton Boat Regatta in Jelgava (28.08.2021.)

SEPTEMBER

- Technology and Innovation Festival Mehatrons (4.,11.-12.09.2021.)
- Harvest Festival in Jelgava County (25.09.2021.)

OCTOBER

- The Night of Legends in the Manors of Jelgava County (30.10.2021.)

NOVEMBER

- Celebration of the 103rd Anniversary of Proclamation of the Republic of Latvia in Jelgava and its vicinity (18.11.2021.)
- Lighting of the Christmas Tree and a market in Jelgava (28.11.2021.)



JELGAVA REGIONAL TOURISM CENTRE

Akadēmijas iela 1, Jelgava,
+371 63005447
tic@tornis.jelgava.lv
www.visit.jelgava.lv

JelgavaTIC
 visit.jelgava

PHOTO

From the archives of tourism objects of Jelgava Regional Tourism Centre, Jelgava City Municipality, Jelgava Local Municipality, Ozolnieki Local Municipality and Gvido Kanjons, Arta Joma, Ilze Strēle, Bilžu ligzda



PUBLISHER

Jelgava Regional Tourism Centre, 2020

PRINT

SIA „IBC Print Baltic”

CARTOGRAPHY

SIA „Karšu izdevniecība Jāņa Sēta”